

## List of pages in this Trip Kit

Trip Kit Index

Airport Information For RKTL

Terminal Charts For RKTL

Revision Letter For Cycle 16-2023

Change Notices

Notebook

## General Information

Location: ULJIN KOR  
ICAO: RKTL  
Lat/Long: N36° 46.62', E129° 27.70'  
Elevation: 175 ft

Airport Use: Public  
Daylight Savings: Not Observed  
UTC Conversion: -9:00 = UTC  
Magnetic Variation: 9.0° W

Fuel Types: 100 Octane (LL), Jet A-1  
Customs: No  
Airport Type: IFR  
Landing Fee: Yes  
Control Tower: Yes  
Jet Start Unit: No  
LLWS Alert: No  
Beacon: Yes

Sunrise: 2108 Z  
Sunset: 0924 Z

## Runway Information

Runway: 17  
Length x Width: 5906 ft x 148 ft  
Surface Type: asphalt  
TDZ-Elev: 175 ft  
Lighting: Edge, ALS, Centerline

Runway: 35  
Length x Width: 5906 ft x 148 ft  
Surface Type: asphalt  
TDZ-Elev: 161 ft  
Lighting: Edge, ALS, Centerline, TDZ

## Communication Information

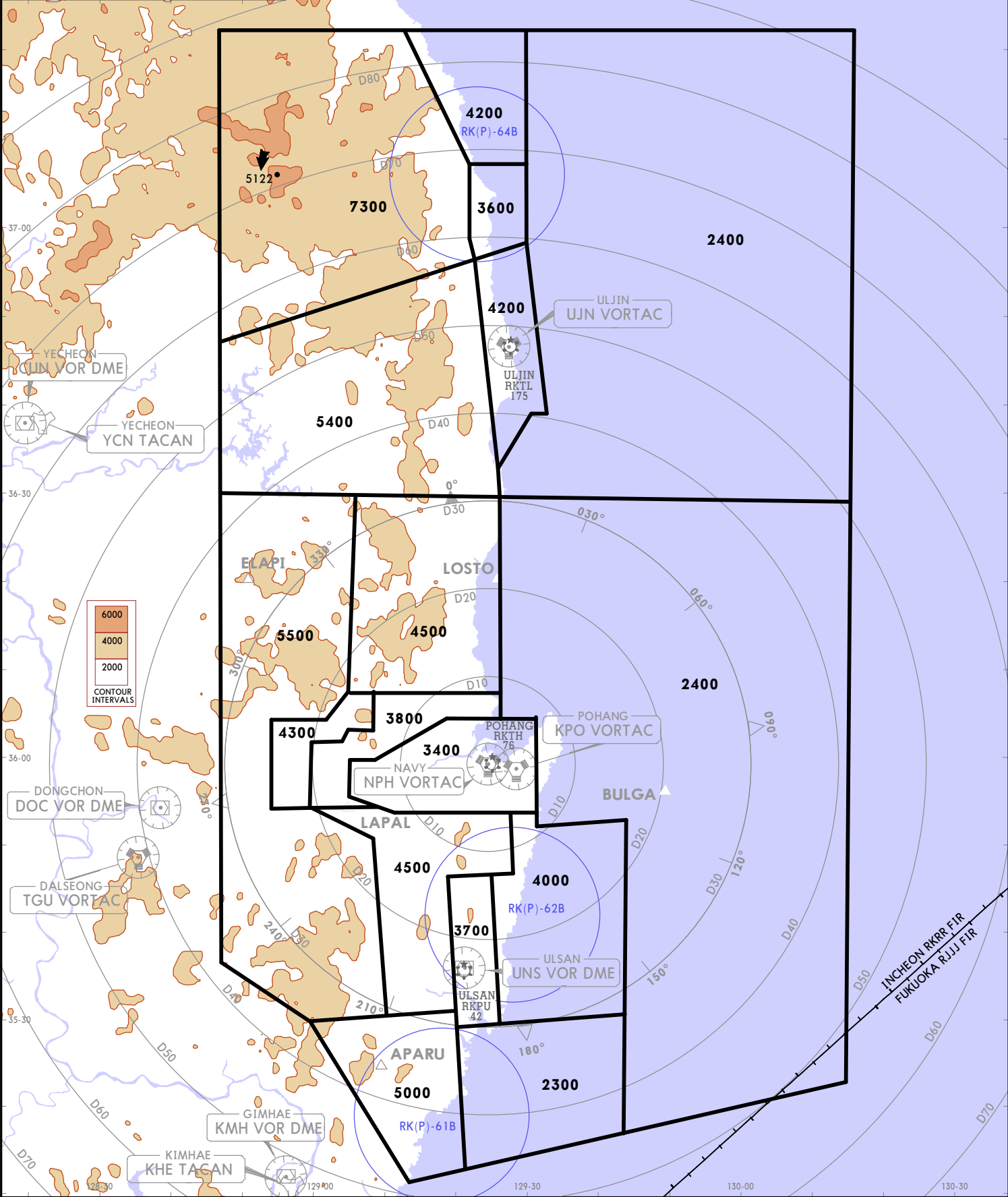
Uljin Tower: 118.550  
Uljin Ground: 121.775  
Uljin Arrival: 120.875  
Uljin Departure: 120.875

CHANGES: ATRport name

Apt Elev See Graphic Alt Set: hPa Trans level: FL140 Trans alt: 14000

1. Chart only to be used for cross-checking of altitudes assigned while under vectoring control.  
2. Levels assigned by ATC include a correction for low temperature effect when necessary.

LOST COMMS LOST COMMS LOST COMMS LOST COMMS  
Set transponder code 7600.  
Follow communications failure procedure on relevant SID or STAR.  
LOST COMMS LOST COMMS LOST COMMS LOST COMMS



© JEPPesen, 2021, 2022. ALL RIGHTS RESERVED.

## RADIO COMMUNICATION FAILURE PROCEDURE

### IFR

#### 1) GENERAL

- a) No one may take off unless two-way communication can be maintained with the Air Traffic Control.
- b) On recognition of communication failure during flight, squawk 7600 and if it is necessary to ensure safe altitude, climb to Minimum Safe Altitude or above to MAINTAIN obstacle clearance.

Then comply with the following procedures:

#### 2) VMC

If the failure occurs in VFR condition, or if VFR condition is encountered after the failure, each pilot shall continue the flight under VFR and land as soon as practicable in accordance with runway in use.

#### 3) IMC

If the failure occurs in IFR condition, or if paragraph 2 of this section cannot be complied with, each pilot shall continue the flight according to the following:

#### ARRIVAL

- 1) Proceed to BANYA, ALDON IAF at the last assigned altitude or the minimum altitude of IAF, whichever is higher, and hold; then
- 2) Commence Instrument Approach as close as possible to the EXPECT further clearance time (EFC) issued by ATC or estimated time of arrival (ETA) filed in the flight plan; and
- 3) Land, if possible, within 30 minutes after ETA or the last acknowledged EFC or ETA, whichever is later.

RKTL  
ULJIN

JEPPESSEN

ULJIN, KOREA

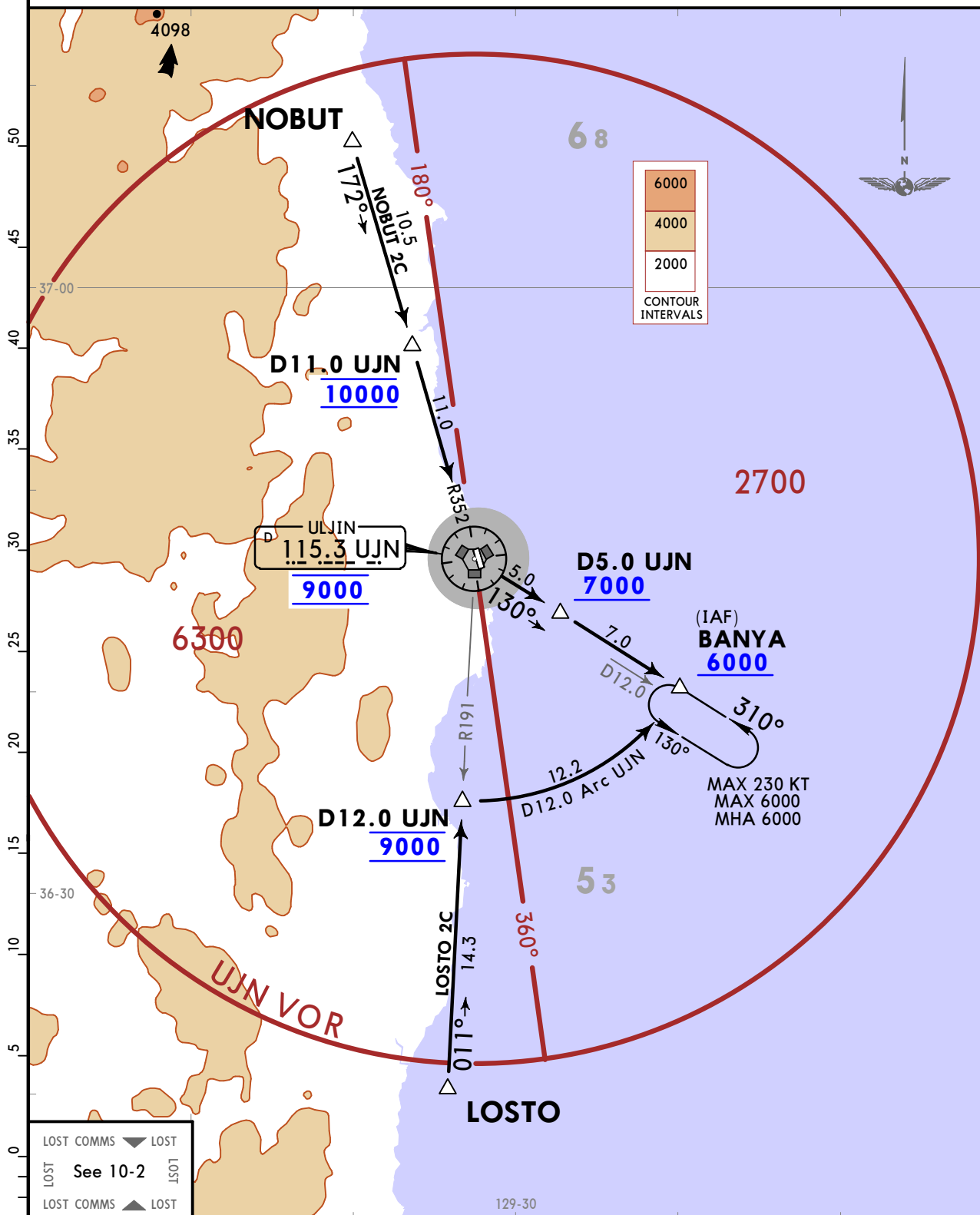
28 OCT 22 (10-2A)

STAR

Apt Elev  
175

Alt Set: hPa Trans level: FL140

LOSTO 2C (LOSTO 2C) [LOST2C]  
NOBUT 2C (NOBUT 2C) [NOBU2C]  
ARRIVALS  
(RWY 35)



LOST COMMS ▼ LOST  
LOST See 10-2 LOST  
LOST COMMS ▲ LOST

STAR	ROUTING
LOSTO 2C	From LOSTO proceed on UJN R191 to D12.0 UJN, then turn on D12.0 Arc UJN to BANYA. Cross UJN R191/D12.0 at 9000 and MAINTAIN 9000, and BANYA at or above 6000.
NOBUT 2C	From NOBUT proceed on UJN R352 to UJN VOR, then proceed on UJN R130 to BANYA. Cross UJN R352/D11.0 at 10000, then MAINTAIN 10000, UJN VOR at 9000, UJN R130/D5.0 at or above 7000 and BANYA at or above 6000.

RKTL  
ULJIN

JEPPESSEN

ULJIN, KOREA

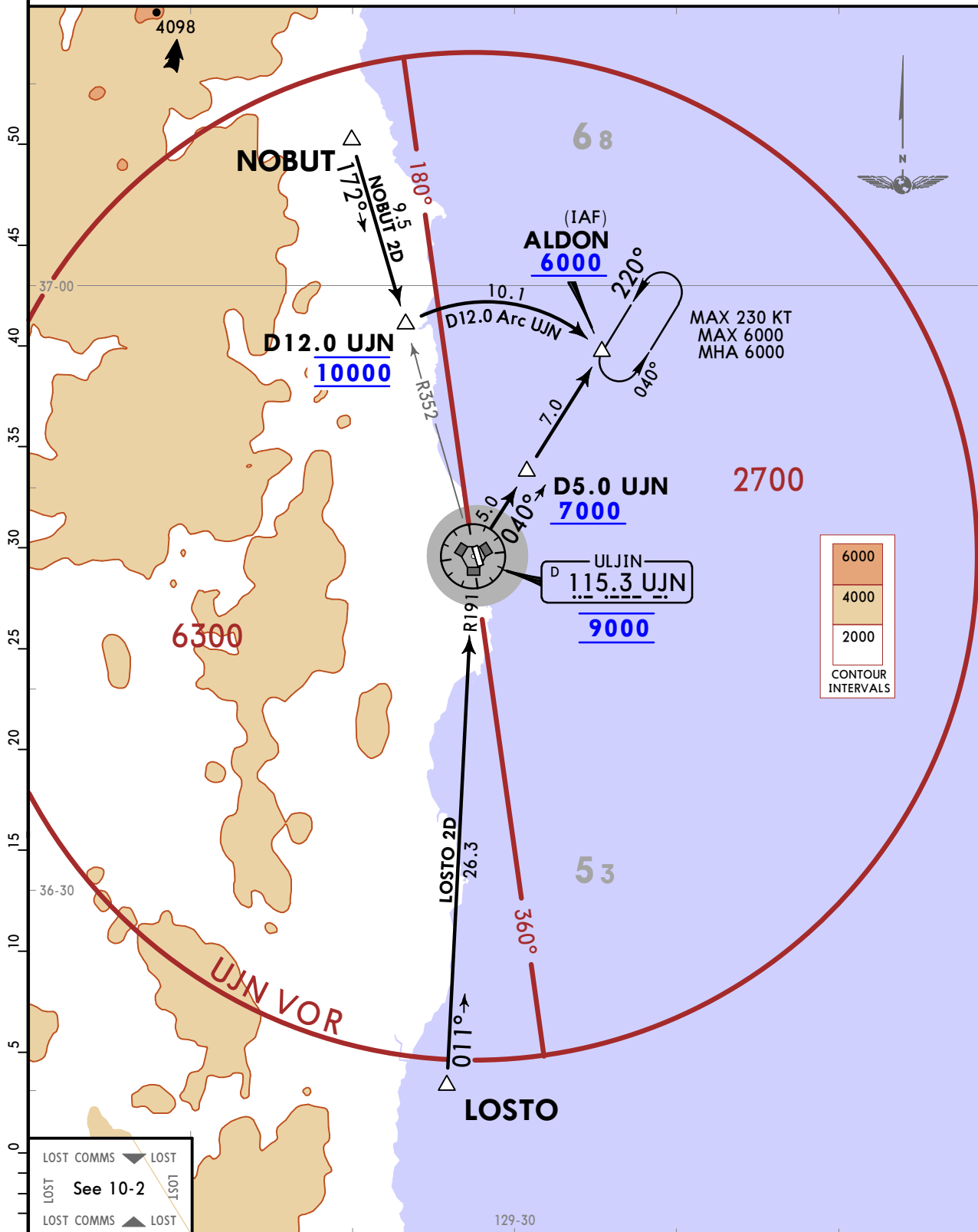
28 OCT 22 (10-2B)

STAR

Apt Elev  
175

Alt Set: hPa Trans level: FL140

LOSTO 2D (LOSTO 2D) [LOST2D]  
NOBUT 2D (NOBUT 2D) [NOBU2D]  
ARRIVALS  
(RWY 17)



LOST COMMS ▼ LOST  
LOST See 10-2  
LOST COMMS ▲ LOST

STAR	ROUTING
LOSTO 2D	From LOSTO proceed on UJN R191 to UJN VOR, then proceed on UJN R040 to ALDON. Cross UJN VOR at 9000, UJN R040/D5.0 at or above 7000 and ALDON at or above 6000.
NOBUT 2D	From NOBUT proceed on UJN R352 to D12.0 UJN, then turn on D12.0 Arc UJN to ALDON. Cross R352/D12.0 at 10000, then MAINTAIN 10000 and ALDON at or above 6000.

**RKTL**  
**ULJIN**

**JEPPESSEN**

**ULJIN, KOREA**

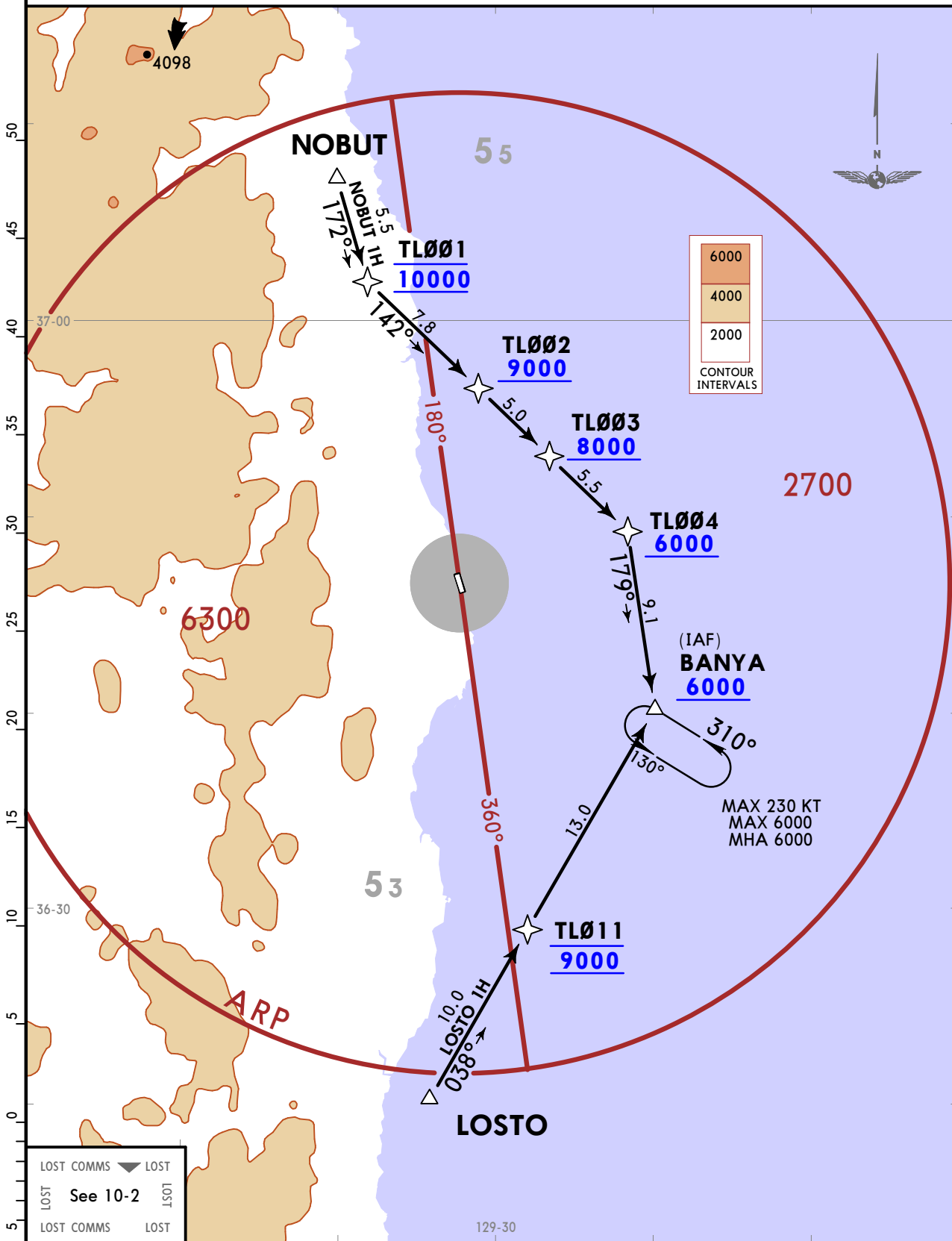
28 OCT 22 **(10-2C)**

**RNAV STAR**

Apt Elev  
**175**

Alt Set: hPa Trans level: FL140  
1. RNAV 1 operation. 2. GNSS required.  
3. ATS surveillance service required.

**LOSTO 1H (LOSTO 1H) [LOST1H]  
NOBUT 1H (NOBUT 1H) [NOBU1H]  
RNAV ARRIVALS  
(RWY 35)**



LOST COMMS ▼ LOST  
LOST See 10-2 LOST  
LOST COMMS LOST

STAR	ROUTING
<b>LOSTO 1H</b>	LOSTO - TL011 - BANYA.
<b>NOBUT 1H</b>	NOBUT - TL001 - TL002 - TL003 - TL004 - BANYA.

CHANGES: None.

**RKTL**  
**ULJIN**

**JEPPESSEN**

**ULJIN, KOREA**

14 MAY 21

**(10-2D)**

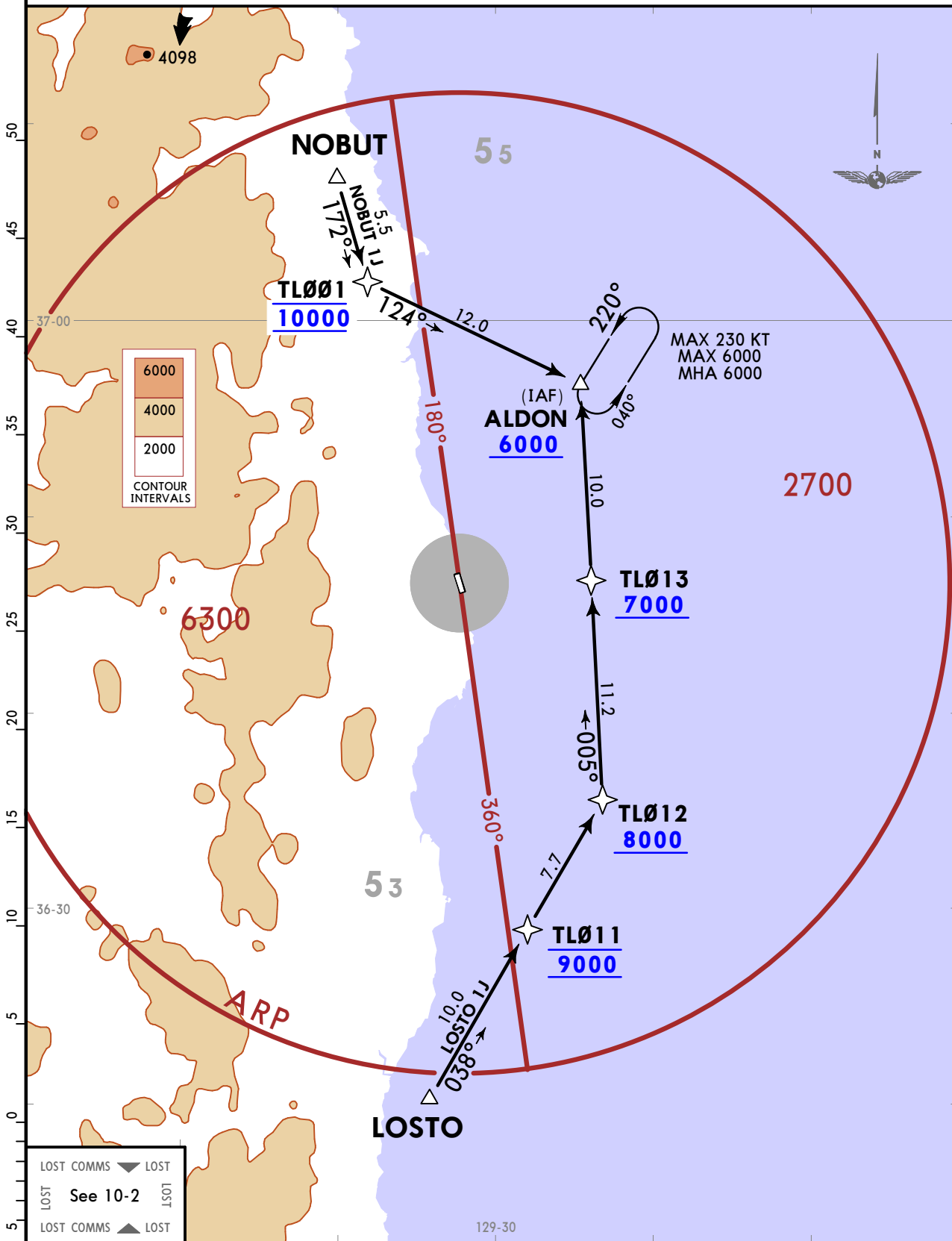
**Eff 19 May 1600Z**

**RNAV STAR**

Apt Elev  
**175**

Alt Set: hPa Trans level: FL140  
1. RNAV 1 operation. 2. GNSS required.  
3. ATS surveillance service required.

**LOSTO 1J (LOSTO 1J) [LOST1J]**  
**NOBUT 1J (NOBUT 1J) [NOBU1J]**  
**RNAV ARRIVALS**  
**(RWY 17)**



LOST COMMS	▼	LOST
LOST	See 10-2	LOST
LOST COMMS	▲	LOST

STAR	ROUTING
<b>LOSTO 1J</b>	LOSTO - TL011 - TL012 - TL013 - ALDON.
<b>NOBUT 1J</b>	NOBUT - TL001 - ALDON.

CHANGES: LENON waypoint renamed ALDON.

© JEPPESSEN, 2020, 2021. ALL RIGHTS RESERVED.

RKTL  
ULJIN

 **JEPPESEN**  
5 AUG 22 **10-3** Eff 10 Aug 1600Z

**ULJIN, KOREA**  
**SID**

## RADIO COMMUNICATION FAILURE PROCEDURE

### IFR

#### 1) GENERAL

- a) No one may take off unless two-way communication can be maintained with the Air Traffic Control.
- b) On recognition of communication failure during flight, squawk 7600 and if it is necessary to ensure safe altitude, climb to Minimum Safe Altitude or above to MAINTAIN obstacle clearance.

Then comply with the following procedures:

If the failure occurs in VFR condition, or if VFR condition is encountered after the failure, each pilot shall continue the flight under VFR and land as soon as practicable in accordance with runway in use.

#### 3) IMC

If the failure occurs in IFR condition, or if paragraph 2 of this section cannot be complied with, each pilot shall continue the flight according to the following:

#### DEPARTURE

- 1) Under Pilot Navigation  
Proceed by the route, observe the altitude and restriction described in the SID chart or assigned at the last ATC clearance received.
- 2) When being vectored or having been directed by ATC, proceed in the most direct manner possible to rejoin the current flight plan route no later than the next significant point, taking into consideration the applicable minimum flight altitude.

**RKTL**  
**ULJIN**

**JEPPESSEN**

**ULJIN, KOREA**

5 AUG 22

**(10-3A)**

**Eff 10 Aug 1600Z**

**SID**

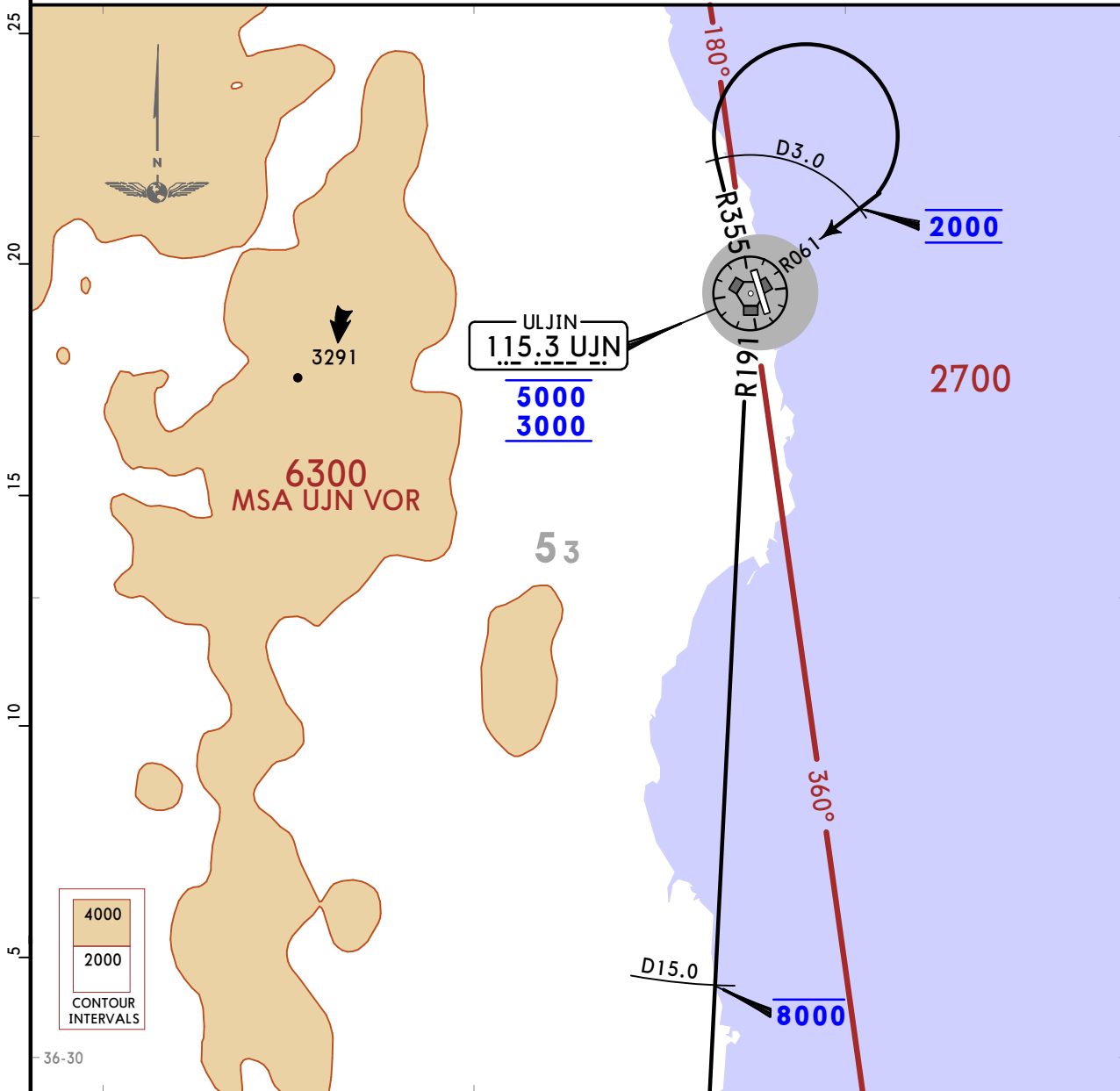
ULJIN  
Departure  
**120.875**

Apt Elev  
**175**

Trans alt: 14000

**LOSTO 1A DEPARTURE**  
**(LOSTO 1A) [LOST1A]**  
**(RWY 35)**

**CAT A & B**



4000  
2000  
CONTOUR  
INTERVALS

LOST COMMS ▼ LOST  
LOST See 10-3 LOST  
LOST COMMS ▲ LOST

Minimum 5.2% climb gradient is required to 900 for obstacle avoidance.  
Minimum 6.5% climb gradient is required to 8000 for ATC purpose.

Gnd speed-KT	75	100	150	200	250	300
5.2% V/V (fpm)	395	527	790	1053	1316	1580
6.5% V/V (fpm)	494	658	987	1316	1646	1975

**INITIAL CLIMB**

Climb on UJN R355 at UJN D3.0 turn RIGHT and proceed on UJN R061/D3.0 to UJN. Then climb on UJN R191 to LOSTO. Cross UJN R061/D3.0 MAINTAIN 2000, UJN between 3000 and 5000, UJN R191/D15.0 at or below 8000, MAINTAIN 8000 unless otherwise instructed by ATC.

**RKTL**  
**ULJIN**

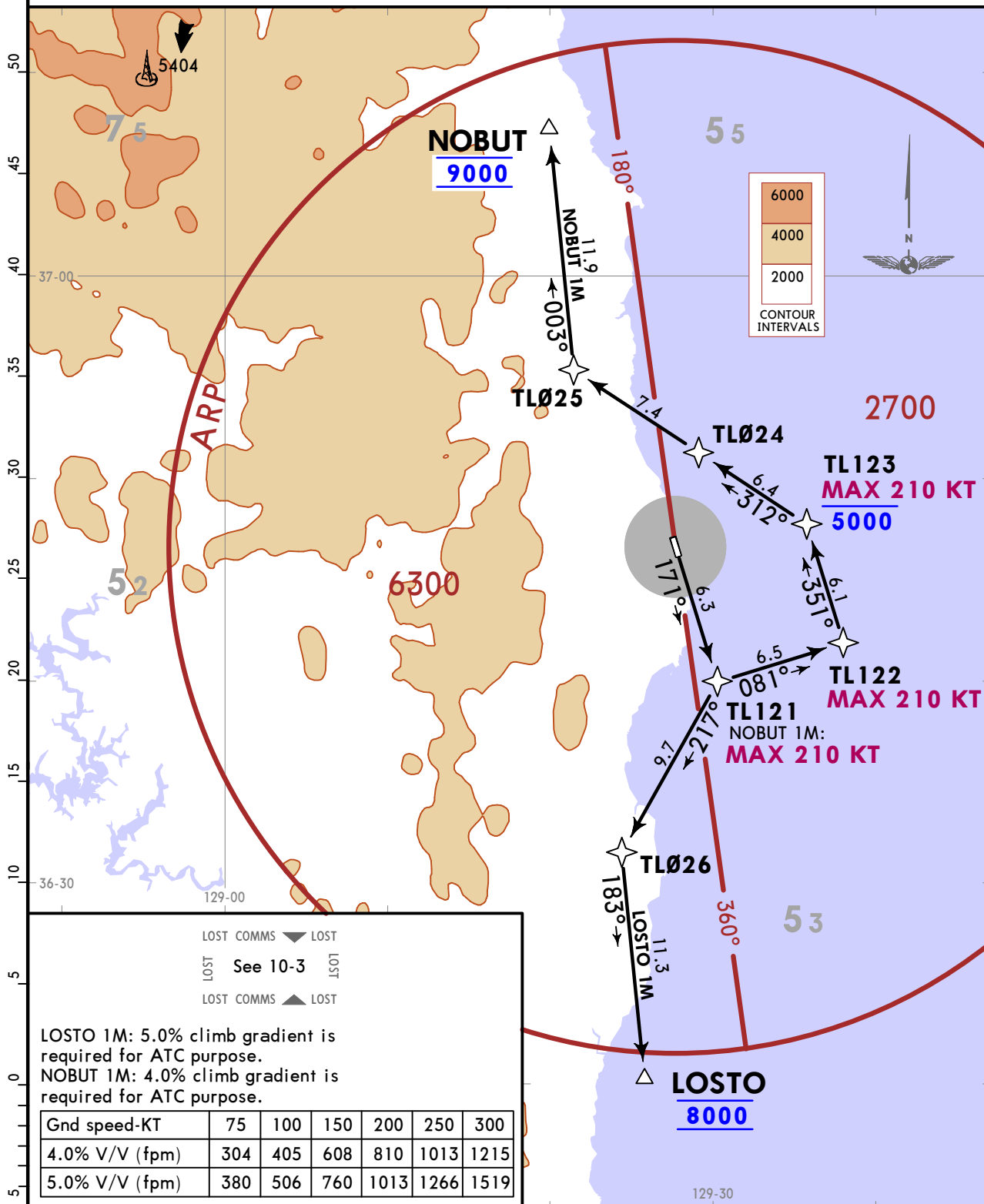
**JEPPESSEN**  
28 OCT 22 **(10-3B)**

**ULJIN, KOREA**  
**RNAV SID**

ULJIN Departure <b>120.875</b>	Apt Elev <b>175</b>	Trans alt: 14000
		RNAV 1 operation GNSS required
		ATS surveillance service required.

**LOSTO 1M (LOSTO 1M) [LOST1M]**  
**NOBUT 1M (NOBUT 1M) [NOBU1M]**  
**RNAV DEPARTURES**  
**(RWY 17)**

**SPEED RESTRICTION**  
NOBUT 1M: MAX 210 KT to TL123



LOSTO 1M: 5.0% climb gradient is required for ATC purpose.  
NOBUT 1M: 4.0% climb gradient is required for ATC purpose.

Gnd speed-KT	75	100	150	200	250	300
4.0% V/V (fpm)	304	405	608	810	1013	1215
5.0% V/V (fpm)	380	506	760	1013	1266	1519

<b>SID</b>	<b>INITIAL CLIMB</b>
<b>LOSTO 1M</b>	TL121 - TL026 - LOSTO.
<b>NOBUT 1M</b>	TL121 - TL122 - TL123 - TL024 - TL025 - NOBUT.

RKTL  
ULJIN

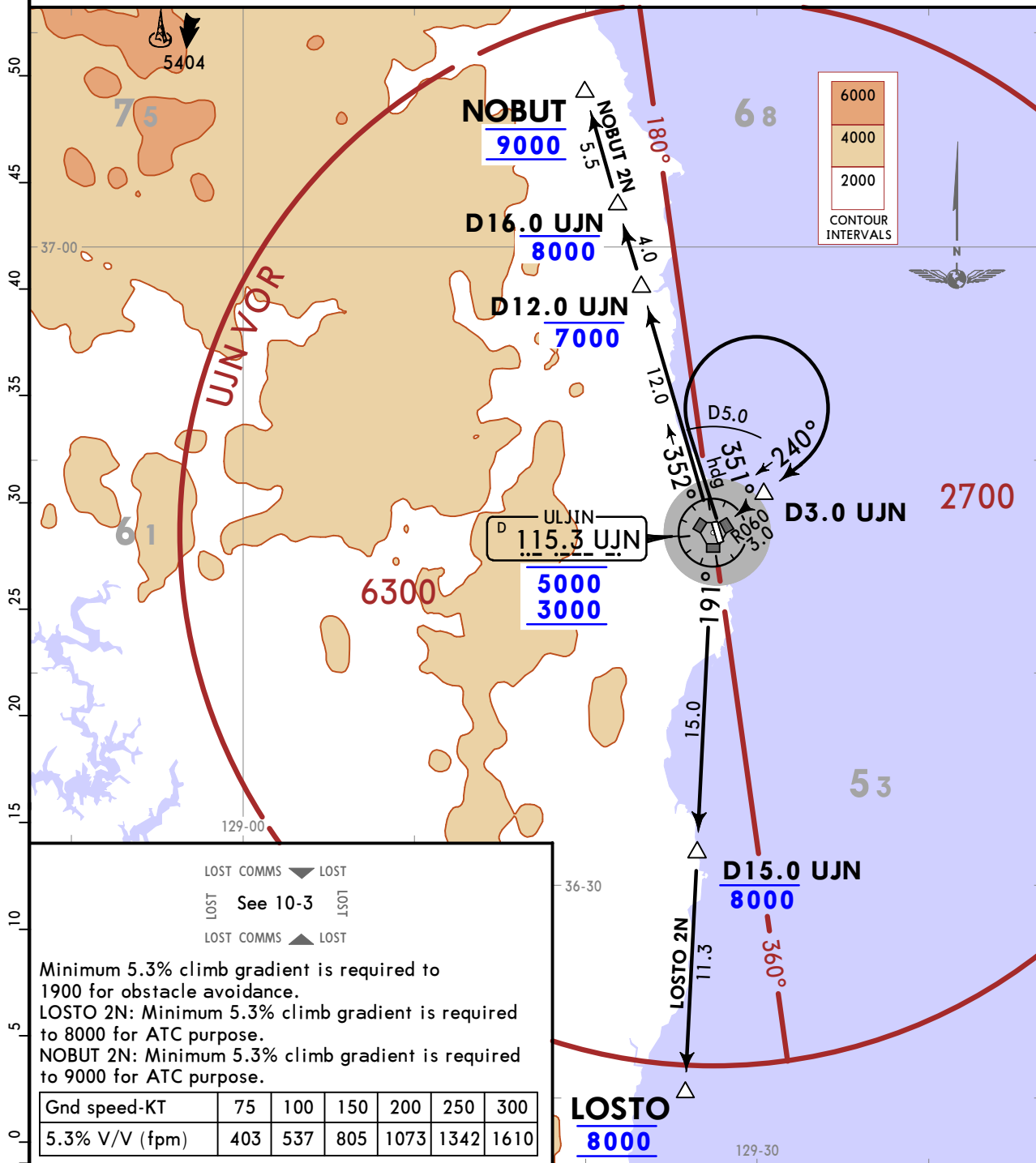
JEPPESEN  
28 OCT 22 (10-3C)

ULJIN, KOREA  
SID

ULJIN Departure 120.875	Apt Elev 175	Trans alt: 14000
-------------------------------	-----------------	------------------

LOSTO 2N (LOSTO 2N) [LOST2N]  
NOBUT 2N (NOBUT 2N) [NOBU2N]  
DEPARTURES  
(RWY 35)

**SPEED RESTRICTION**  
Departure turn limited to MAX 210 KT at D5.0 UJN and UJN VOR.



LOST COMMS ▼ LOST  
LOST See 10-3 LOST  
LOST COMMS ▲ LOST

Minimum 5.3% climb gradient is required to 1900 for obstacle avoidance.  
LOSTO 2N: Minimum 5.3% climb gradient is required to 8000 for ATC purpose.  
NOBUT 2N: Minimum 5.3% climb gradient is required to 9000 for ATC purpose.

Gnd speed-KT	75	100	150	200	250	300
5.3% V/V (fpm)	403	537	805	1073	1342	1610

SID	INITIAL CLIMB
LOSTO 2N	Climb on heading 351° to D5.0 UJN, then turn RIGHT and proceed on UJN R060/D3.0 to UJN VOR. Then climb on UJN R191 to LOSTO. Cross UJN VOR between 3000 and 5000, UJN R191/D15.0 at or below 8000, MAINTAIN 8000 unless otherwise instructed by ATC.
NOBUT 2N	Climb on heading 351° to D5.0 UJN, then turn RIGHT and proceed on UJN R060/D3.0 to UJN VOR. Then climb on UJN R352 to NOBUT. Cross UJN VOR between 3000 and 5000, UJN R352/D12.0 at or below 7000, UJN R352/D16.0 at or below 8000 and MAINTAIN 9000 unless otherwise instructed by ATC.

**RKTL**  
**ULJIN**

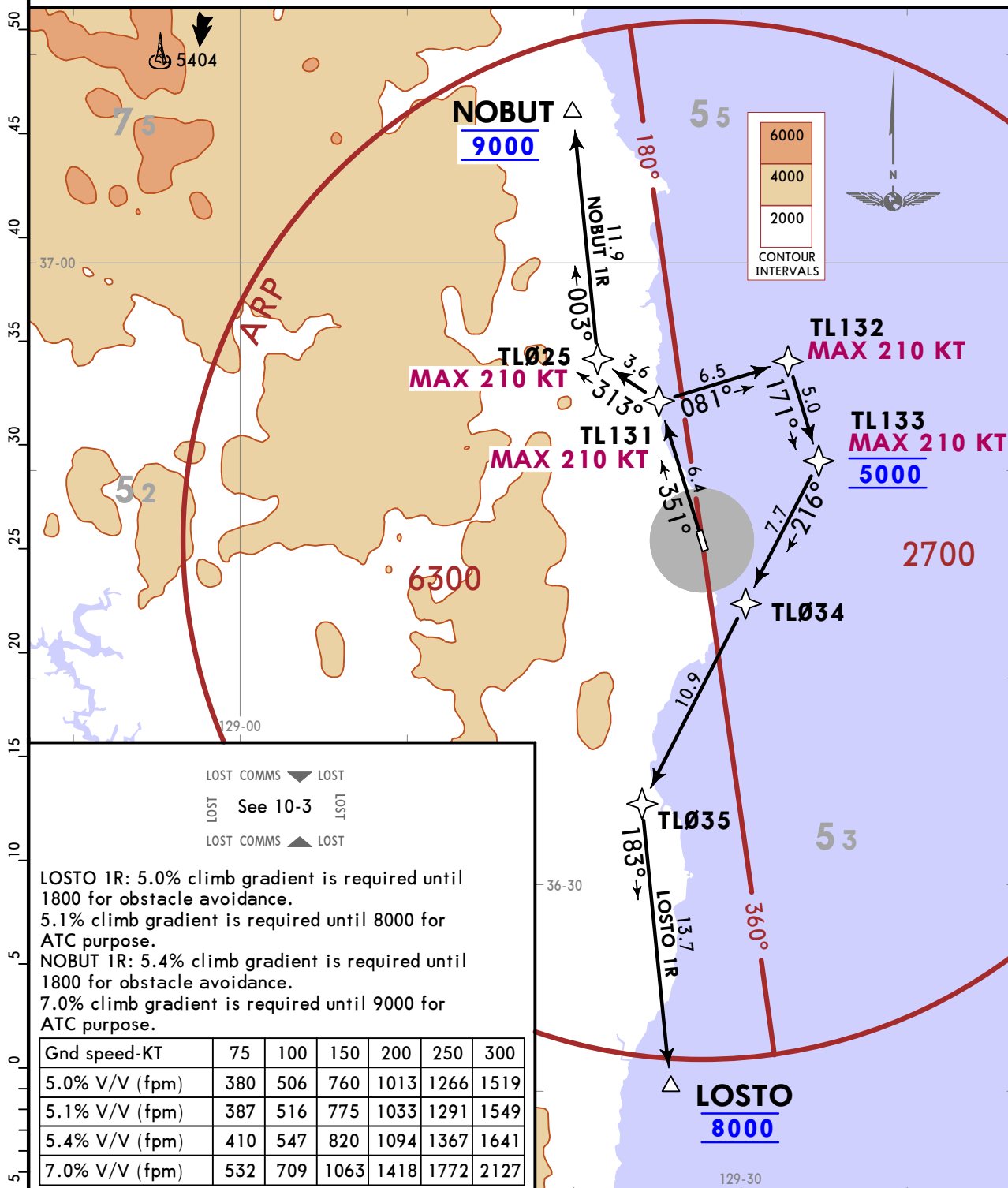
**JEPPESSEN**  
28 OCT 22 **(10-3D)**

**ULJIN, KOREA**  
**RNAV SID**

ULJIN Departure <b>120.875</b>	Apt Elev <b>175</b>	Trans alt: 14000
		RNAV 1 operation GNSS required
		ATS surveillance service required.

**LOSTO 1R (LOSTO 1R) [LOST1R]**  
**NOBUT 1R (NOBUT 1R) [NOBU1R]**  
**RNAV DEPARTURES**  
**(RWY 35)**

**SPEED RESTRICTION**  
Departure turns are limited to MAX 210 KT until:  
LOSTO 1R: TL133  
NOBUT 1R: TL025



SID	INITIAL CLIMB
<b>LOSTO 1R</b>	TL131 - TL132 - TL133 - TL034 - TL035 - LOSTO.
<b>NOBUT 1R</b>	TL131 - TL025 - NOBUT.

CHANGES: None.

© JEPPESSEN, 2020, 2022. ALL RIGHTS RESERVED.

RKTL  
ULJIN

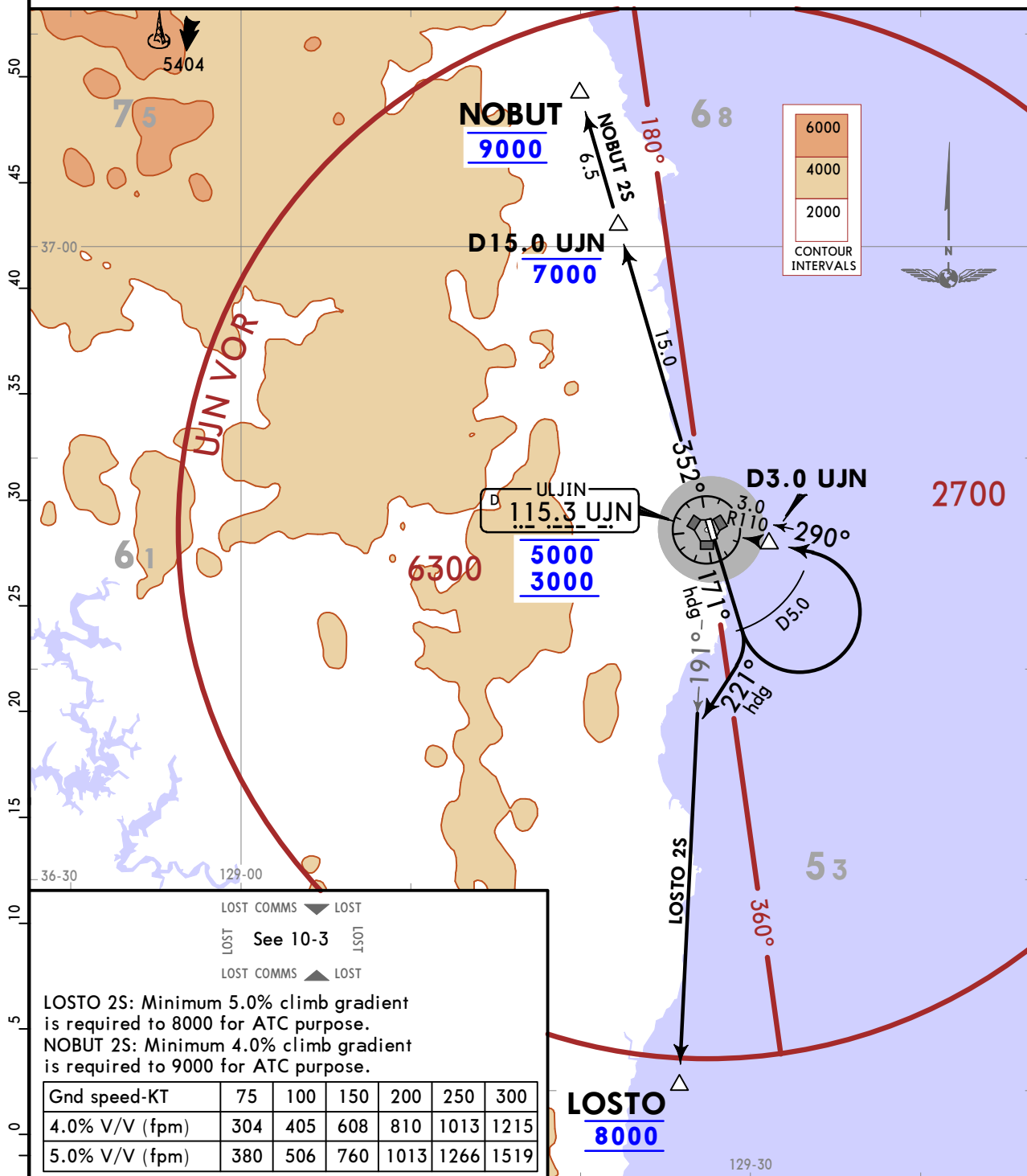
JEPPESSEN  
28 OCT 22 (10-3E)

ULJIN, KOREA  
SID

ULJIN Departure 120.875	Apt Elev 175	Trans alt: 14000
-------------------------------	-----------------	------------------

LOSTO 2S (LOSTO 2S) [LOST2S]  
NOBUT 2S (NOBUT 2S) [NOBU2S]  
DEPARTURES  
(RWY 17)

**SPEED RESTRICTION**  
NOBUT 2S: Departure turn limited to MAX 210 KT at D5.0 UJN and UJN VOR.



SID	INITIAL CLIMB
LOSTO 2S	Climb on heading 171° to D5.0 UJN, then turn RIGHT heading 221° to intercept UJN R191. Then climb on UJN R191 to LOSTO. Climb and MAINTAIN 8000 unless otherwise instructed by ATC.
NOBUT 2S	Climb on heading 171° to D5.0 UJN, then turn LEFT and proceed on UJN R110/D3.0 to UJN VOR, then climb on UJN R352 to NOBUT. Cross UJN VOR between 3000 and 5000 and UJN R352/D15.0 at or below 7000, then MAINTAIN 9000 unless otherwise instructed by ATC.

RKTL  
ULJIN

JEPPESEN

ULJIN, KOREA

28 OCT 22 (10-3F)

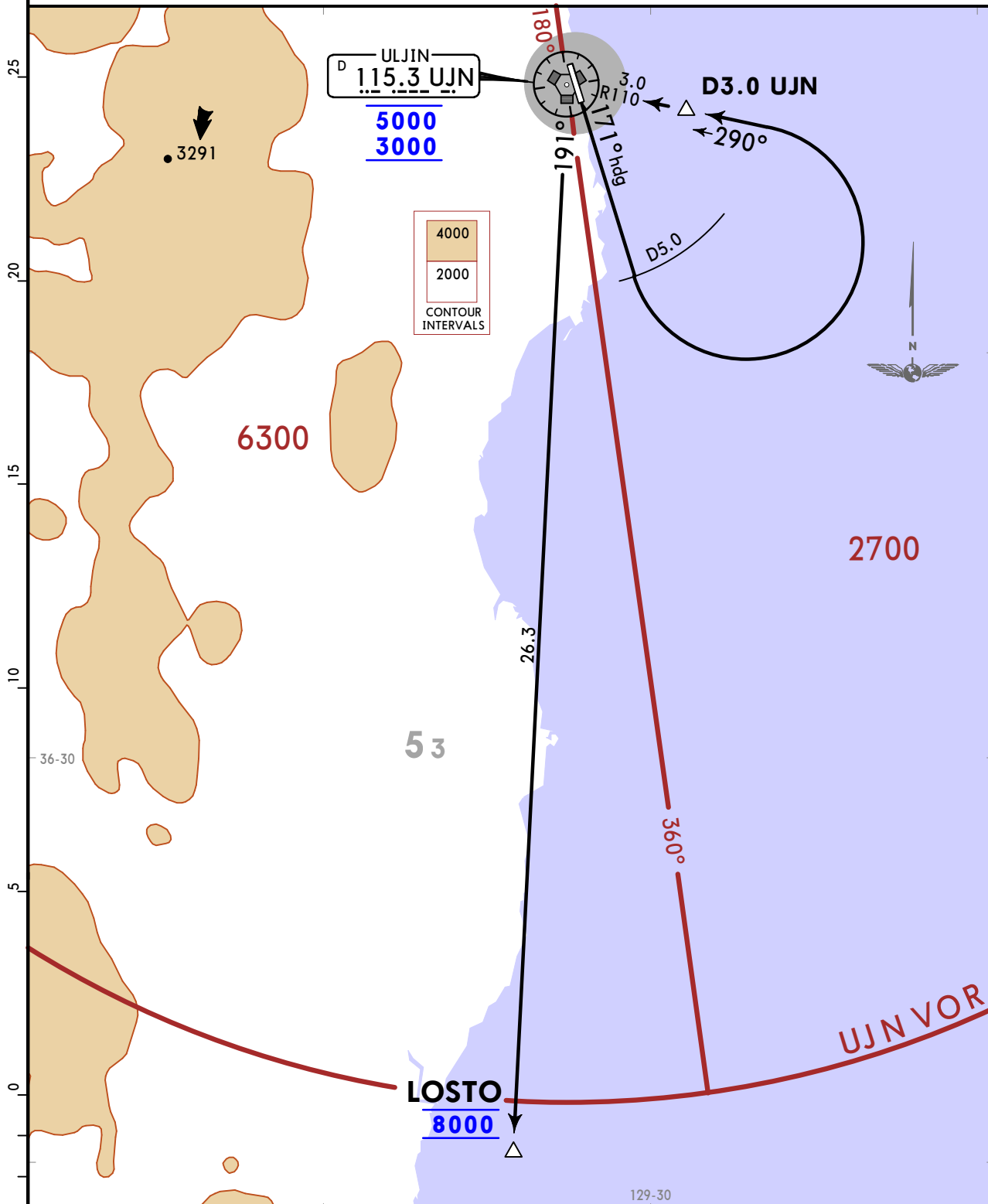
SID

ULJIN  
Departure  
120.875

Apt Elev  
175

Trans alt: 14000

**LOSTO 6S (LOSTO 6S) [LOST6S]  
DEPARTURES  
(RWY 17)**



Minimum 5.0% climb gradient is required to 8000 for ATC purpose.

Gnd speed-KT	75	100	150	200	250	300
5.0% V/V (fpm)	380	506	760	1013	1266	1519

LOST COMMS ▼ LOST  
LOST See 10-3 LOST  
LOST COMMS ▲ LOST

**INITIAL CLIMB**

Climb on heading 171° to D5.0 UJN, then turn LEFT and proceed on UJN R110/D3.0 to UJN VOR, then climb on UJN R191 to LOSTO. Cross UJN VOR between 3000 and 5000 and climb and MAINTAIN 8000.

**RKTL**  
**ULJIN**

**JEPPESEN**

**ULJIN, KOREA**

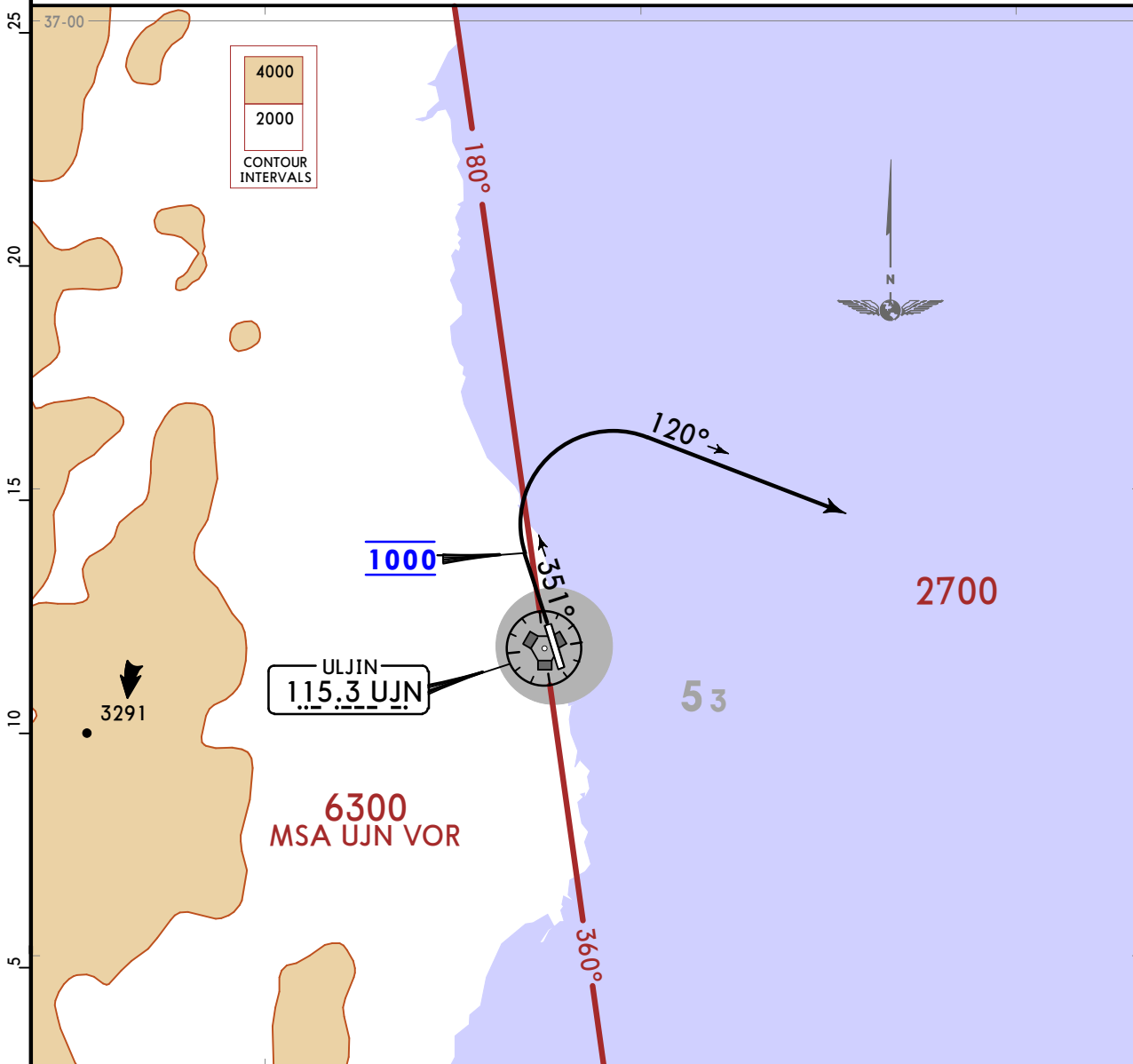
28 OCT 22 **(10-3G)**

**SID**

ULJIN Departure <b>120.875</b>	Apt Elev <b>175</b>	Trans alt: 14000 RADAR required.
--------------------------------------	------------------------	-------------------------------------

**RADAR 1A DEPARTURE**  
**(RADAR 1A) [RADA1A]**  
**(RWY 35)**

**CAT A & B**



LOST COMMS ▼ LOST COMMS ▼ LOST COMMS ▼ LOST COMMS ▼

LOST  
▶ If no radio contact with ATC, squawk 7600,  
and unless otherwise instructed by ATC  
proceed to the last assigned route and altitude.  
\* Pilot shall use caution not to penetrate  
military operation area.

LOST COMMS ▲ LOST COMMS ▲ LOST COMMS ▲ LOST COMMS ▲

Minimum 5.2% climb gradient is required to 900  
for obstacle avoidance.  
Minimum 6.5% climb gradient is required to 2000  
for ATC purpose.

Gnd speed-KT	75	100	150	200	250	300
5.2% V/V (fpm)	395	527	790	1053	1316	1580
6.5% V/V (fpm)	494	658	987	1316	1646	1975

**INITIAL CLIMB**

Climb on Rwy heading until 1000, then turn RIGHT heading 120° and climb and MAINTAIN 2000 for RADAR VECTOR.

**RKTL**

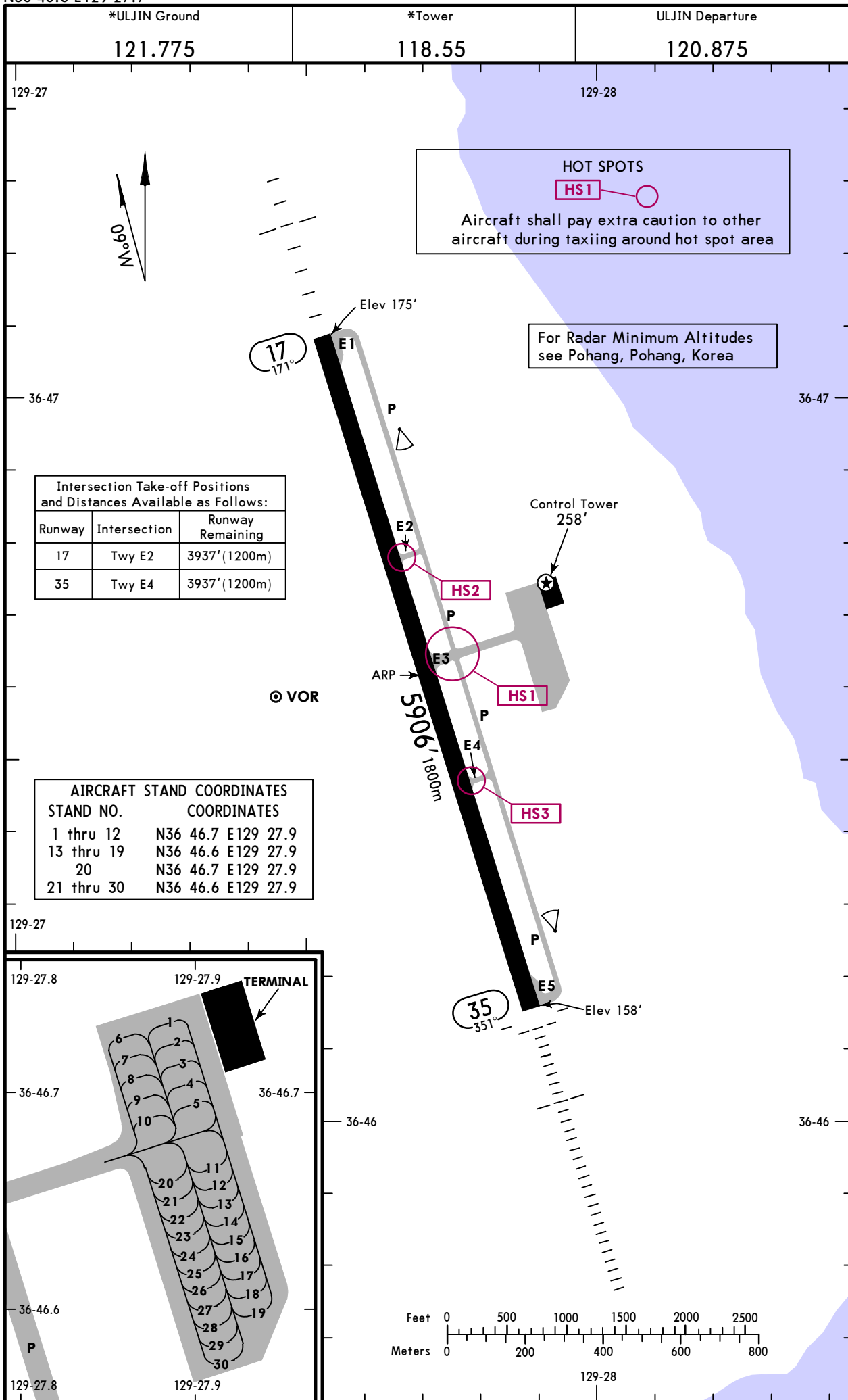
**JEPPESSEN**

**ULJIN, KOREA**

Apt Elev **175'**  
N36 46.6 E129 27.7

14 OCT 22 **(10-9)**

**ULJIN**



CHANGES: Hot spots note, RVR added.

© JEPPESSEN, 2010, 2022. ALL RIGHTS RESERVED.

RKTL



ULJIN, KOREA  
ULJIN

**GENERAL:**

Uljin airport is operated by MOLIT (Ministry of Land, Infrastructure and Transport) for pilot training. All aircraft except aircraft belonging to Uljin Flight Training Center/Academy that wish to use this airport have to obtain approval 24 hr in advance from MOLIT and observe the Uljin Airport Local Regulations.

Rwy 17 right hand traffic.

Birds in vicinity of airport.

Ground Procedure (Radio frequency change points):

Departure: Acft shall change radio frequency from ULJIN Ground (121.775) to ULJIN Tower (118.55) when entering E5 and E1 twy from ramp unless otherwise instructed by ATC.

Arrival: Acft shall change radio frequency from ULJIN Tower (118.55) to ULJIN Ground (121.775) when vacating rwy unless otherwise instructed by ATC.

ADDITIONAL RUNWAY INFORMATION

RWY					USABLE LENGTHS		TAKE-OFF	WIDTH	
					-LANDING BEYOND-				
					Threshold	Glide Slope			
17	HIRL (60m)	CL (30m)	SSALF	PAPI-L (angle 3.0°)	RVR		4896' 1492m		148'
35	HIRL (60m)	CL (30m)	ALSF-I	TDZ PAPI-L (angle 3.0°)	RVR		5003' 1525m		45m

State	TAKE-OFF			
	RL & CL	RL & RCLM	RL or RCLM	NIL (Day Only)
Multi Engine Aircraft	R/V400m R/V1200'	R/V400m R/V1200'	R/V400m R/V1200'	R/V500m R/V1600'
Other	Available Landing Minimums			

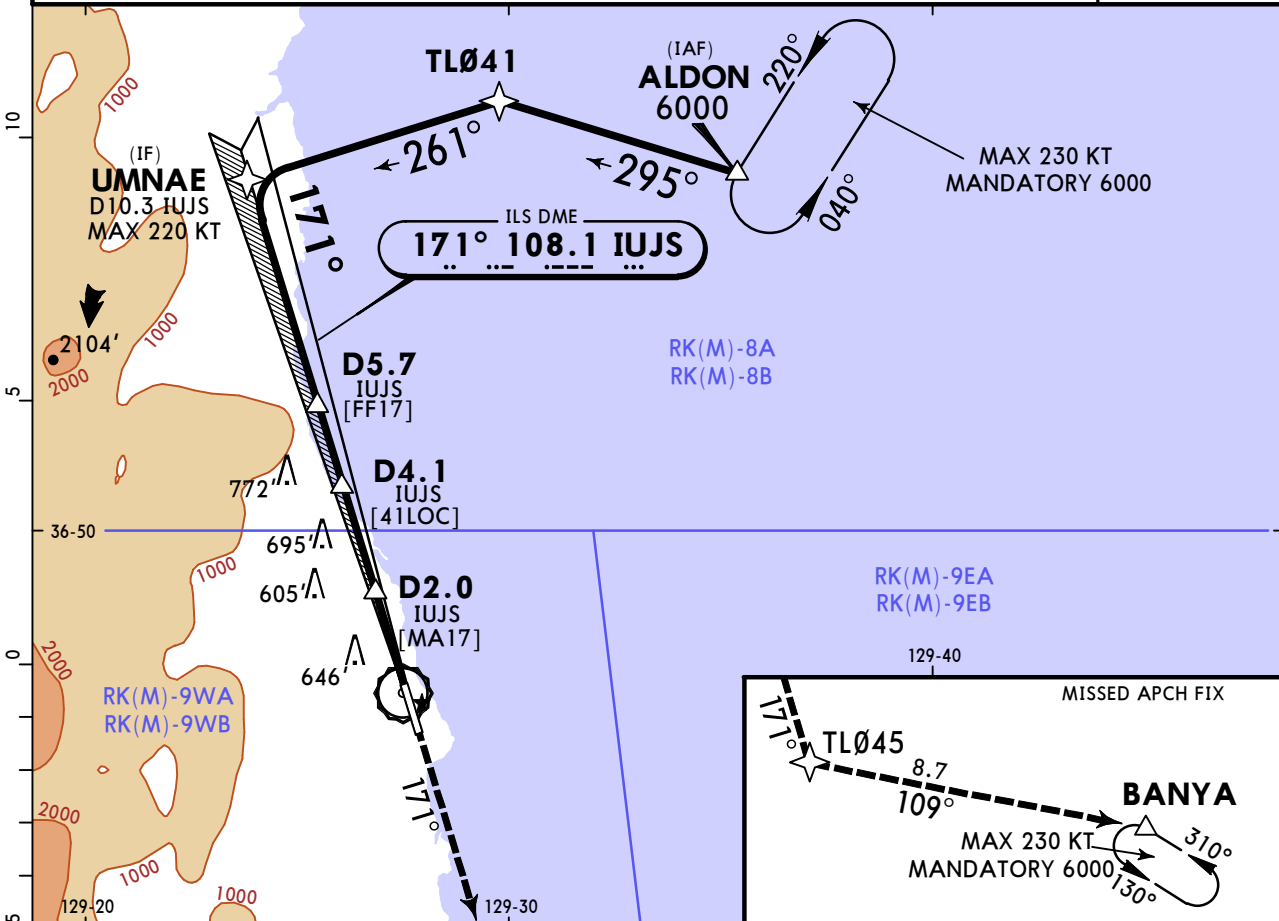
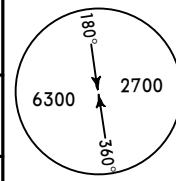
SIDs are designed in accordance with STANDARDS for FLIGHT PROCEDURE DESIGN. The TDZ RVR/VIS may be assessed by the pilot. For Night Operations at least RL or CL and Rwy End Lights are available.

**RKTL**  
**ULJIN**

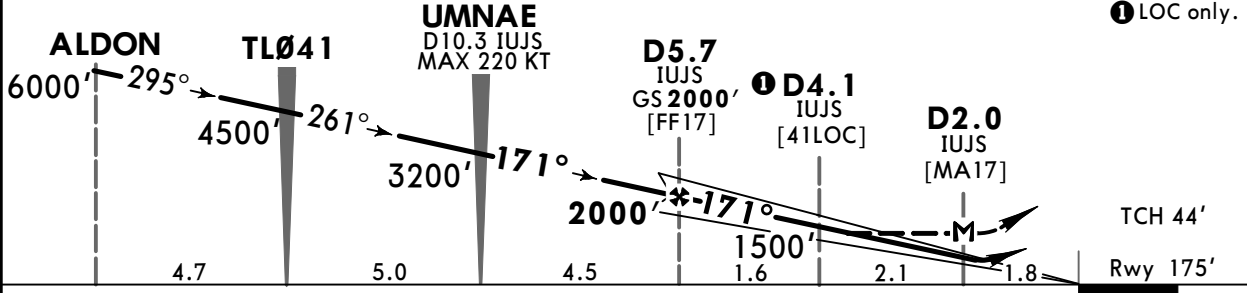
**JEPPESEN**  
6 JAN 23 (11-1)

**ULJIN, KOREA**  
**ILS Z or LOC Z Rwy 17**

ULJIN Arrival <b>120.875</b>		*ULJIN Tower <b>118.55</b>		*Ground <b>121.775</b>	
LOC IUJS <b>108.1</b>	Final Apch Crs <b>171°</b>	<b>D5.7 IUJS</b> <b>2000'</b> (1825')	ILS DA(H) <b>375'</b> (200')	Apt Elev 175' Rwy 175'	
<b>MISSED APCH: Climb STRAIGHT AHEAD until TL045 then turn LEFT to BANYA and hold at MANDATORY 6000'.</b>					
Alt Set: hPa Rwy Elev: 6 hPa Trans level: FL140 Trans alt: 14000'					
RNAV 1 operation. 1. GNSS required. 2. ATS surveillance service required. 3. DME required on a LOC approach. 4. Circling not authorized.					



LOC	IUJS DME	5.0	4.0	3.0
(GS out)	ALTITUDE	1777'	1455'	1132'



Gnd speed-Kts	70	90	100	120	140	160	SSALF PAPI <b>6000'</b> ↑ <b>TL045</b>
ILS GS 3.00°	372	478	531	637	743	849	
LOC Descent Angle 3.04°	376	484	538	645	753	861	

<b>State</b>		<b>STRAIGHT-IN LANDING</b>	
ILS DA(H) <b>375'</b> (200')		LOC (GS out) MDA(H) <b>950'</b> (775')	
FULL	ALS out	FULL	ALS out

PANS OPS	A				
	B				
	C	R/V800m	R/V1200m	R/V3200m	R/V3600m
	D				

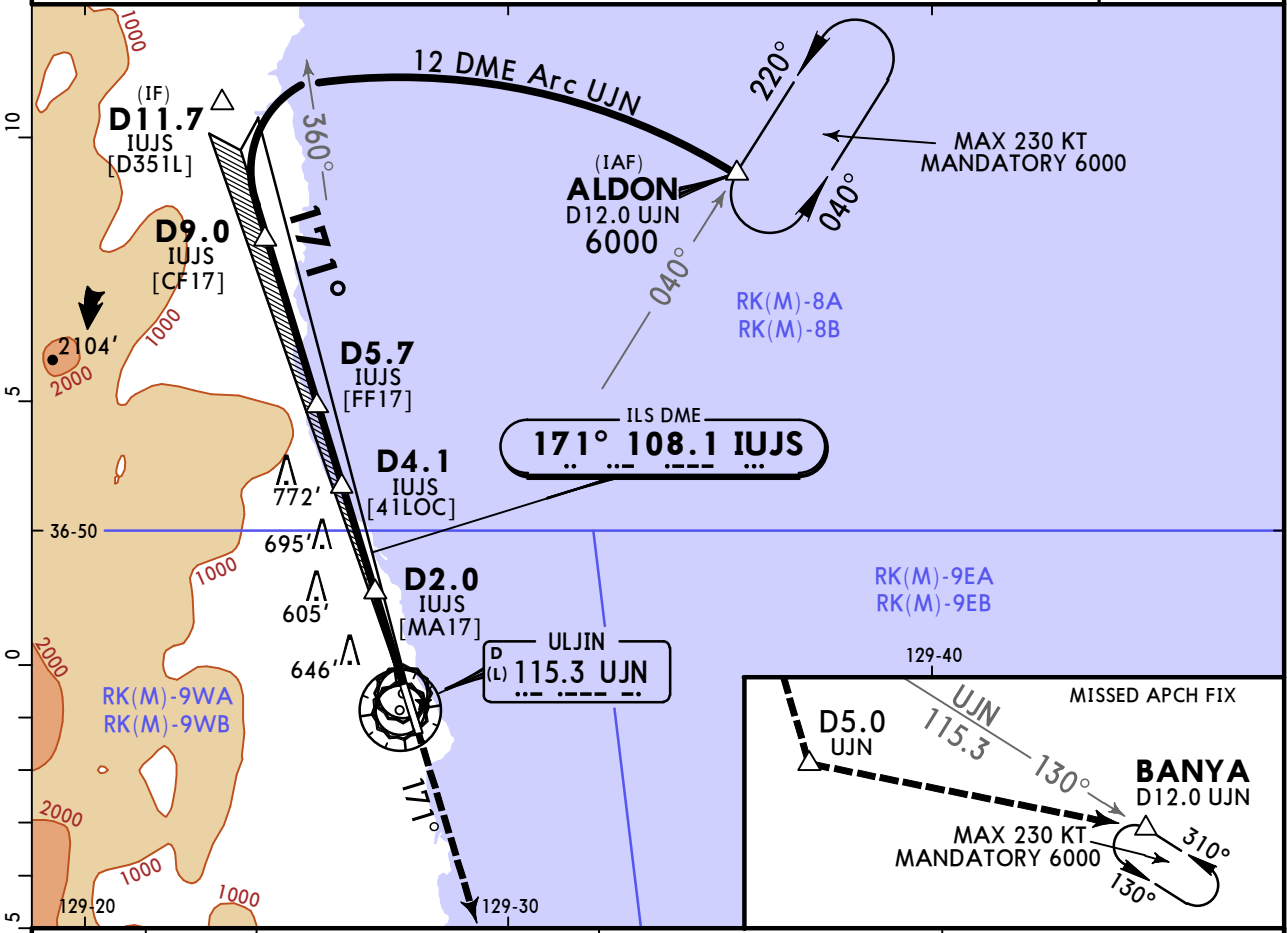
**RKTL**  
**ULJIN**



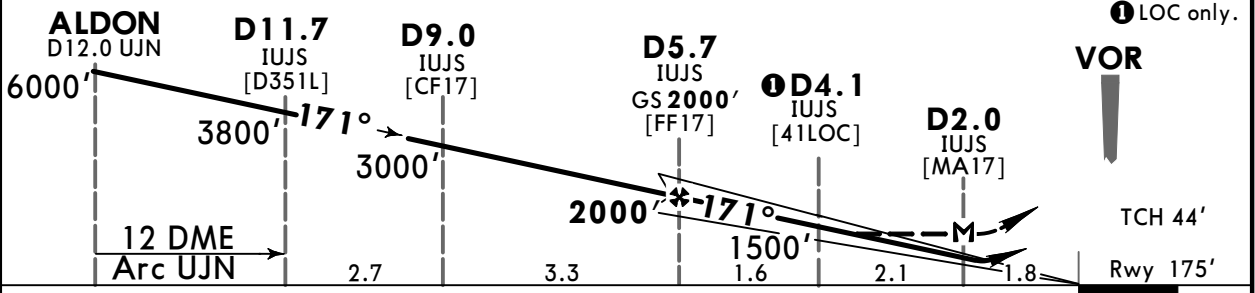
6 JAN 23 (11-2)

**ULJIN, KOREA**  
**ILS Y or LOC Y Rwy 17**

ULJIN Arrival		*ULJIN Tower		*Ground	
120.875		118.55		121.775	
LOC IUJS	Final Apch Crs	D5.7 IUJS	ILS DA(H)	Apt Elev 175'	
<b>108.1</b>	<b>171°</b>	<b>2000'</b> (1825')	<b>375'</b> (200')	Rwy 175'	
<b>MISSED APCH: Climb STRAIGHT AHEAD until D5.0 UJN, then turn LEFT to BANYA and hold at MANDATORY 6000'.</b>					
Alt Set: hPa		Rwy Elev: 6 hPa	Trans level: FL140		Trans alt: 14000'
1. DME is required on ILS/LOC approach. 2. Circling not authorized.					



LOC	IUJS DME	5.0	4.0	3.0
(GS out)	ALTITUDE	1777'	1455'	1132'



Gnd speed-Kts	70	90	100	120	140	160	SSALF PAPI 6000' D5.0 UJN	
ILS GS	3.00°	372	478	531	637	743		849
LOC Descent Angle	3.04°	376	484	538	645	753		861
MAP at D2.0 IUJS								

Timing not authorized for defining the MAP.

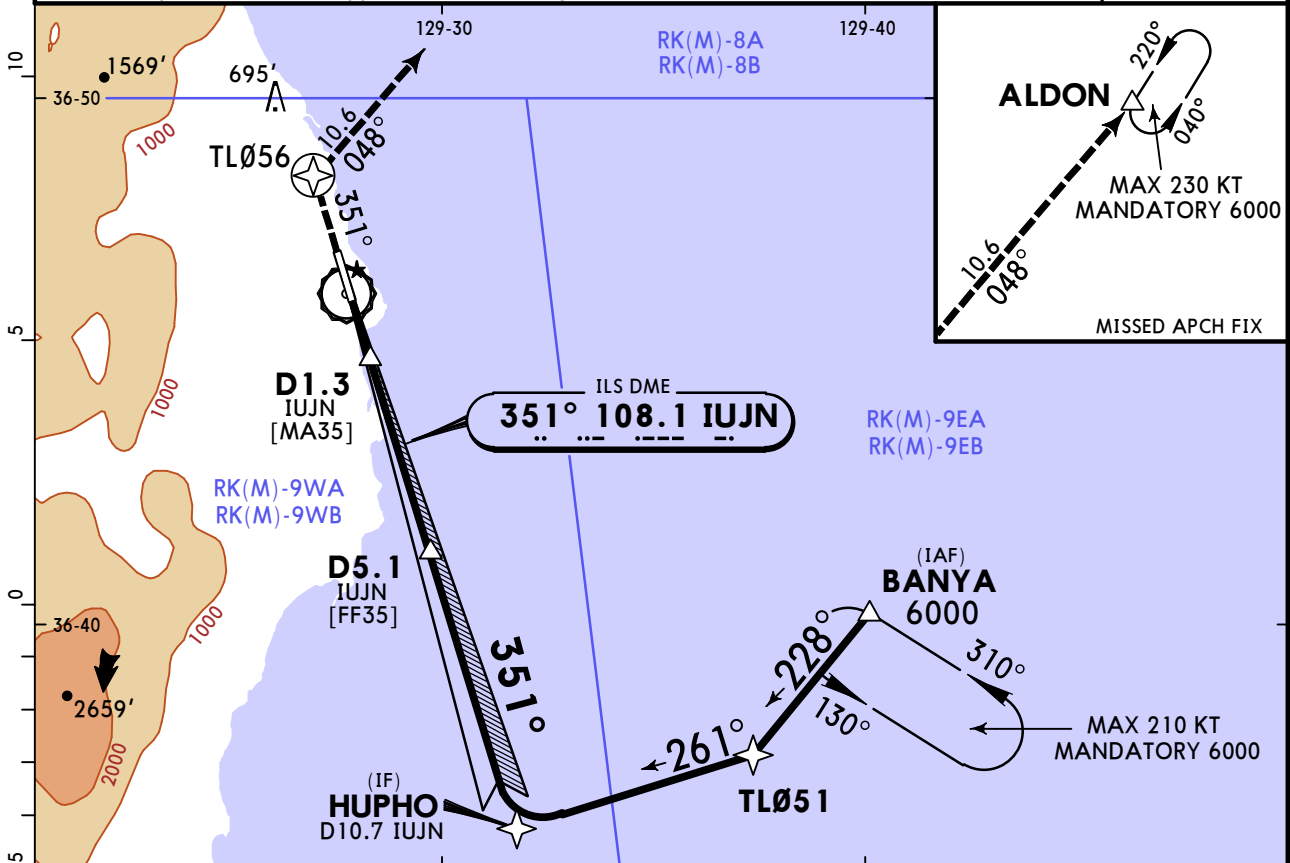
PANS OPS	<b>State</b>				<b>STRAIGHT-IN LANDING</b>			
	ILS				LOC (GS out)			
	DA(H) <b>375'</b> (200')				MDA(H) <b>950'</b> (775')			
	FULL		ALS out		ALS out		ALS out	
A	R/V800m		R/V1200m		R/V3200m		R/V3600m	
B								
C								
D								

**RKTL**  
**ULJIN**

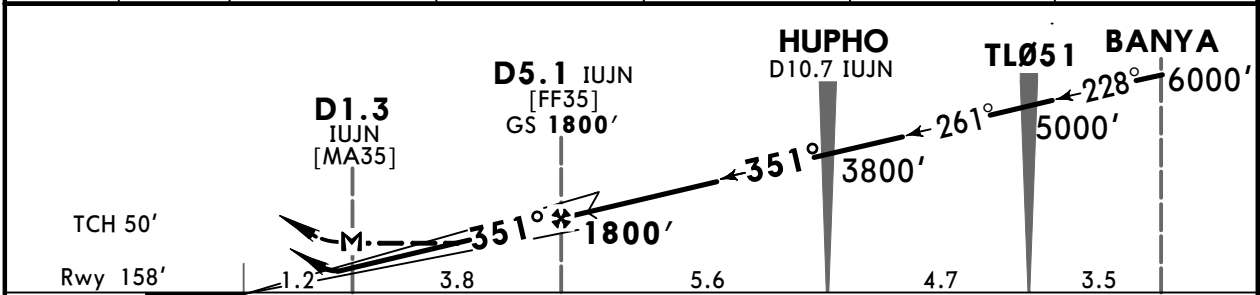
**JEPPESEN**  
6 JAN 23 **(11-3)**

**ULJIN, KOREA**  
**ILS Z or LOC Z Rwy 35**

ULJIN Arrival <b>120.875</b>		*ULJIN Tower <b>118.55</b>		*Ground <b>121.775</b>	
LOC IUJN <b>108.1</b>	Final Apch Crs <b>351°</b>	<b>D5.1 IUJN</b> <b>1800'</b> (1642')	ILS DA(H) Refer to Minimums	Apt Elev 175'	Rwy 158'
<b>MISSED APCH: Climb STRAIGHT AHEAD until TL056, then turn RIGHT on track of 048° to ALDON and hold at MANDATORY 6000'.</b> Refer to minimums for missed apch climb gradient.					
Alt Set: hPa    Rwy Elev: 6 hPa    Trans level: FL140    Trans alt: 14000'					
RNAV 1 operation.    1. GNSS required. 2. ATS surveillance service required. 3. DME required on a LOC approach. 4. Circling not authorized.					



LOC	IUJN DME	1.3	2.0	3.0	4.0	5.0
(GS out)	ALTITUDE	579'	805'	1128'	1451'	1774'



Gnd speed-Kts	70	90	100	120	140	160	ALSF-I PAPI <b>6000'</b> TL056	
ILS GS	3.00°	372	478	531	637	743		849
LOC Descent Angle	3.04°	376	484	538	645	753		861
MAP at D1.3 IUJN								

Timing not authorized for defining the MAP.

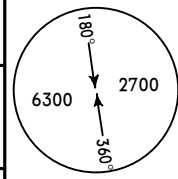
<b>PANS OPS</b>	<b>State</b>					
	<b>ILS</b>			<b>LOC (GS out)</b>		
	Missed Apch Climb Gradient MIN 4.0%		Missed Apch Climb Gradient MIN 2.5%		MDA(H) <b>580'</b> (422')	
	DA(H) <b>391'</b> (233')		DA(H) <b>511'</b> (353')			
	FULL	ALS out	FULL	ALS out	FULL	ALS out
A	R550m		R/V1100m		R/V1500m	
B		R/V1200m		R/V1800m		R/V2200m
C	V800m					
D						

**RKTL**  
**ULJIN**

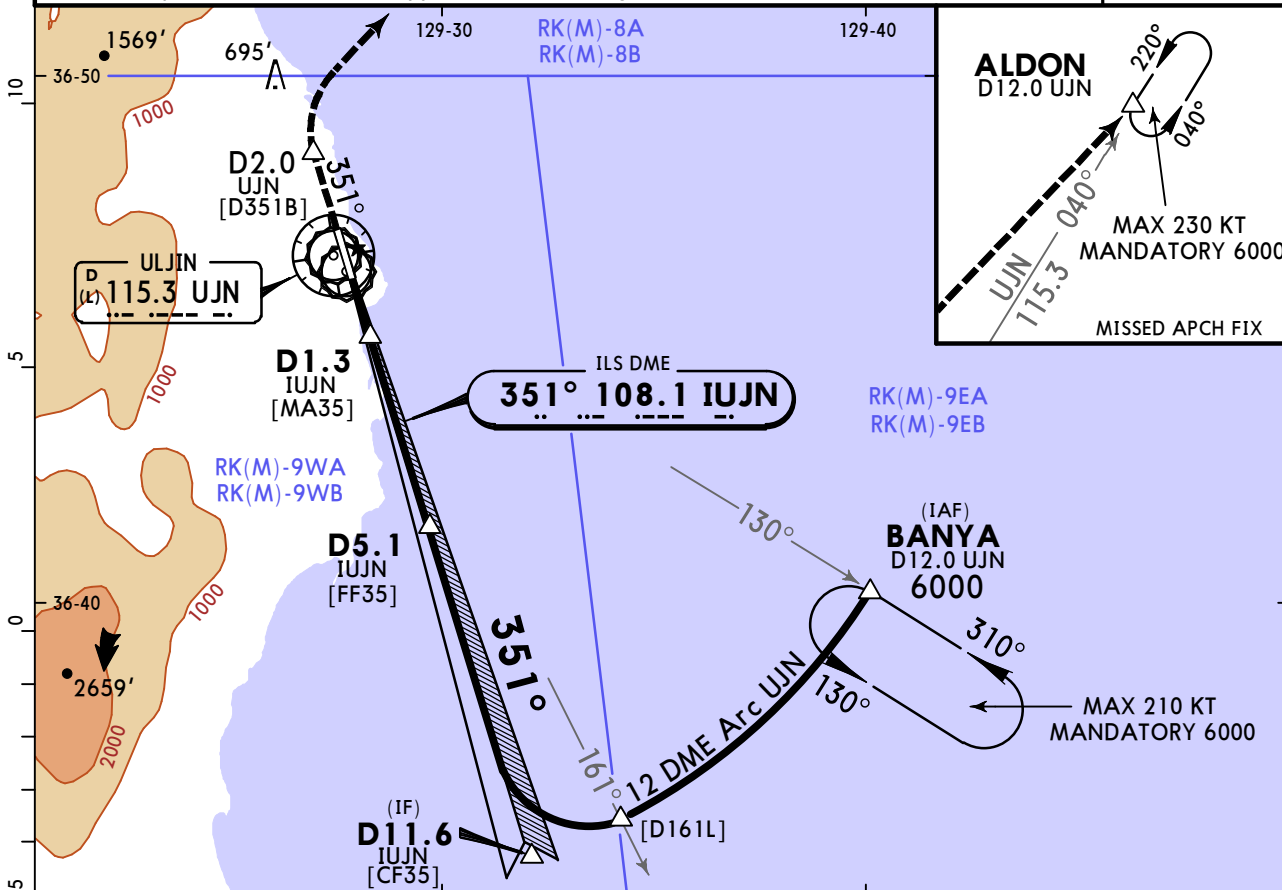
**JEPPESEN**  
6 JAN 23 (11-4)

**ULJIN, KOREA**  
**ILS Y or LOC Y Rwy 35**

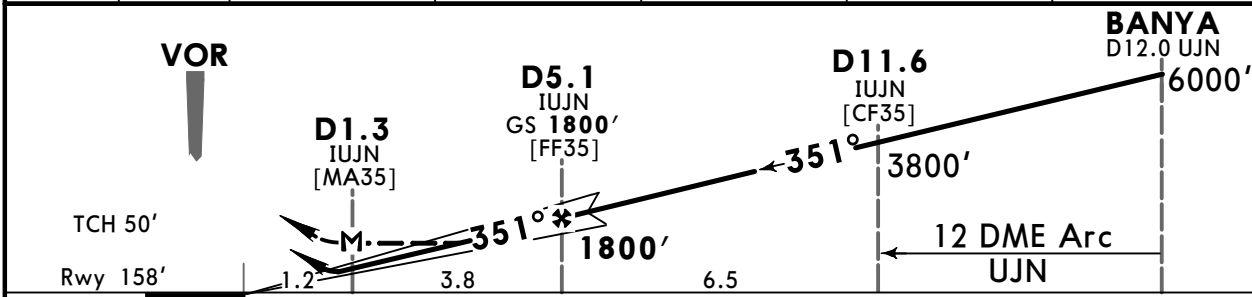
ULJIN Arrival <b>120.875</b>		*ULJIN Tower <b>118.55</b>		*Ground <b>121.775</b>	
LOC IUJN <b>108.1</b>	Final Apch Crs <b>351°</b>	D5.1 IUJN <b>1800'</b> (1642')	ILS DA(H) Refer to Minimums	Apt Elev 175'	Rwy 158'
<b>MISSED APCH: Climb STRAIGHT AHEAD until D2.0 UJN, then turn RIGHT to ALDON and hold at MANDATORY 6000'.</b> Refer to minimums for missed apch climb gradient.					
Alt Set: hPa      Rwy Elev: 6 hPa      Trans level: FL140      Trans alt: 14000'					
1. DME required on an ILS/LOC approach. 2. Circling not authorized.					



MSA UJN VOR



LOC (GS out)	IUJN DME	1.3	2.0	3.0	4.0	5.0
	ALTITUDE	579'	805'	1128'	1451'	1774'



Gnd speed-Kts	70	90	100	120	140	160	ALSF-I PAPI <b>6000'</b> ↑ <b>D2.0</b> UJN
ILS GS 3.00°	372	478	531	637	743	849	
LOC Descent Angle 3.04°	376	484	538	645	753	861	
MAP at D1.3 IUJN							

Timing not authorized for defining the MAP.

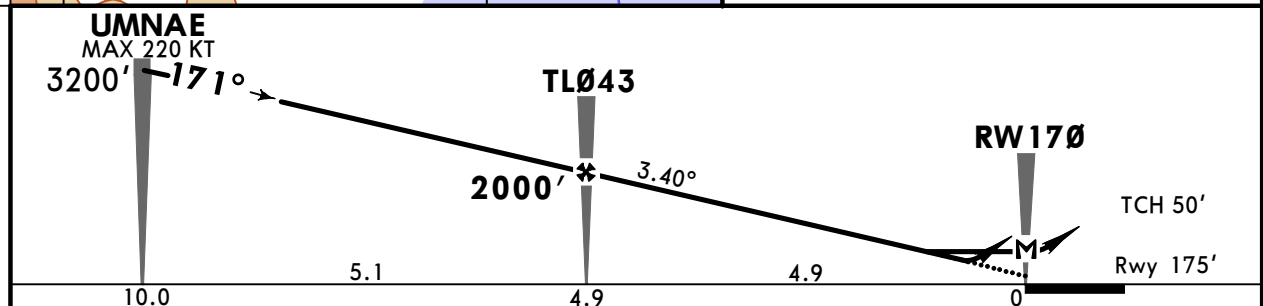
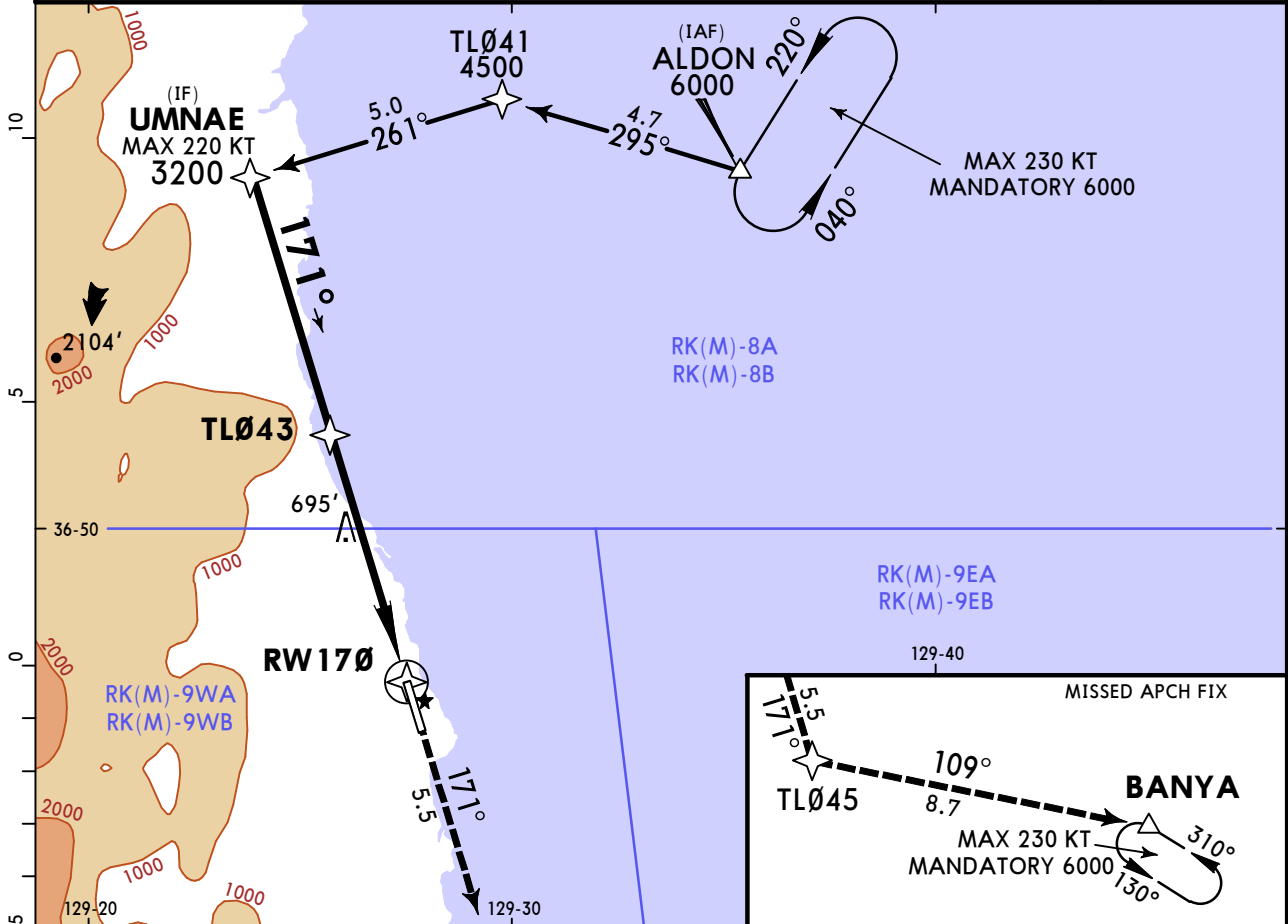
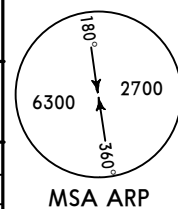
PANS OPS	<b>State</b>					
	<b>ILS</b>				<b>LOC (GS out)</b>	
	Missed Apch Climb Gradient MIN 4.0%		Missed Apch Climb Gradient MIN 2.5%		MDA(H) <b>580'</b> (422')	
	DA(H) <b>391'</b> (233')		DA(H) <b>511'</b> (353')		ALS out	
FULL		ALS out		ALS out		
A						
B	R550m	R/V1200m	R/V1100m	R/V1800m	R/V1500m	R/V2200m
C	V800m					
D						

**RKTL**  
**ULJIN**

**JEPPESEN**  
6 JAN 23 (12-1)

**ULJIN, KOREA**  
**RNP Rwy 17**

ULJIN Arrival <b>120.875</b>		*ULJIN Tower <b>118.55</b>		*Ground <b>121.775</b>	
RNAV	Final Apch Crs <b>171°</b>	<b>TL043</b> <b>2000' (1825')</b>	LNAV/VNAV DA(H) <b>690' (515')</b>	Apt Elev 175' Rwy 175'	
<b>MISSED APCH: Climb to 6000' on track of 171° to TL045, then turn LEFT on track of 109° to BANYA. Hold as published.</b>					
Alt Set: hPa		Rwy Elev: 6 hPa		Trans level: FL140	
RNP Apch		RNP 0.30 required			
1. Baro-VNAV not authorized below -20°C or above 22°C. 2. Circling not authorized.					



Gnd speed-Kts	70	90	100	120	140	160	SSALF PAPI	6000' ↑ on 171° track	TL045
Glide Path Angle 3.40°	421	541	602	722	842	963			
MAP at RW170									

Timing not authorized for defining the MAP.

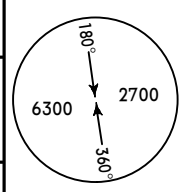
PANS OPS	<b>State</b>			
	LNAV/VNAV		STRAIGHT-IN LANDING	
	DA(H) <b>690' (515')</b>		MDA(H) <b>960' (785')</b>	
	ALS out		ALS out	
A				
B				
C	R/V2000m	R/V2400m	R/V3200m	R/V3600m
D				

**RKTL**  
**ULJIN**

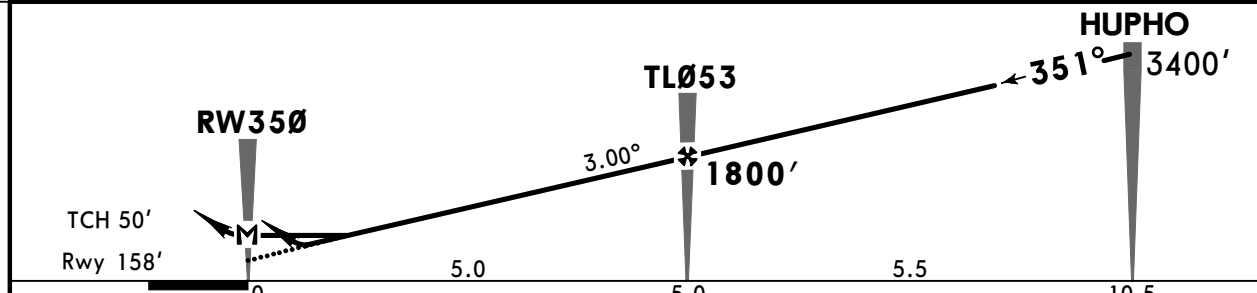
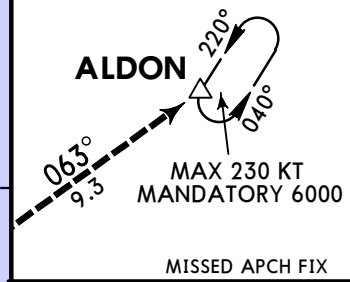
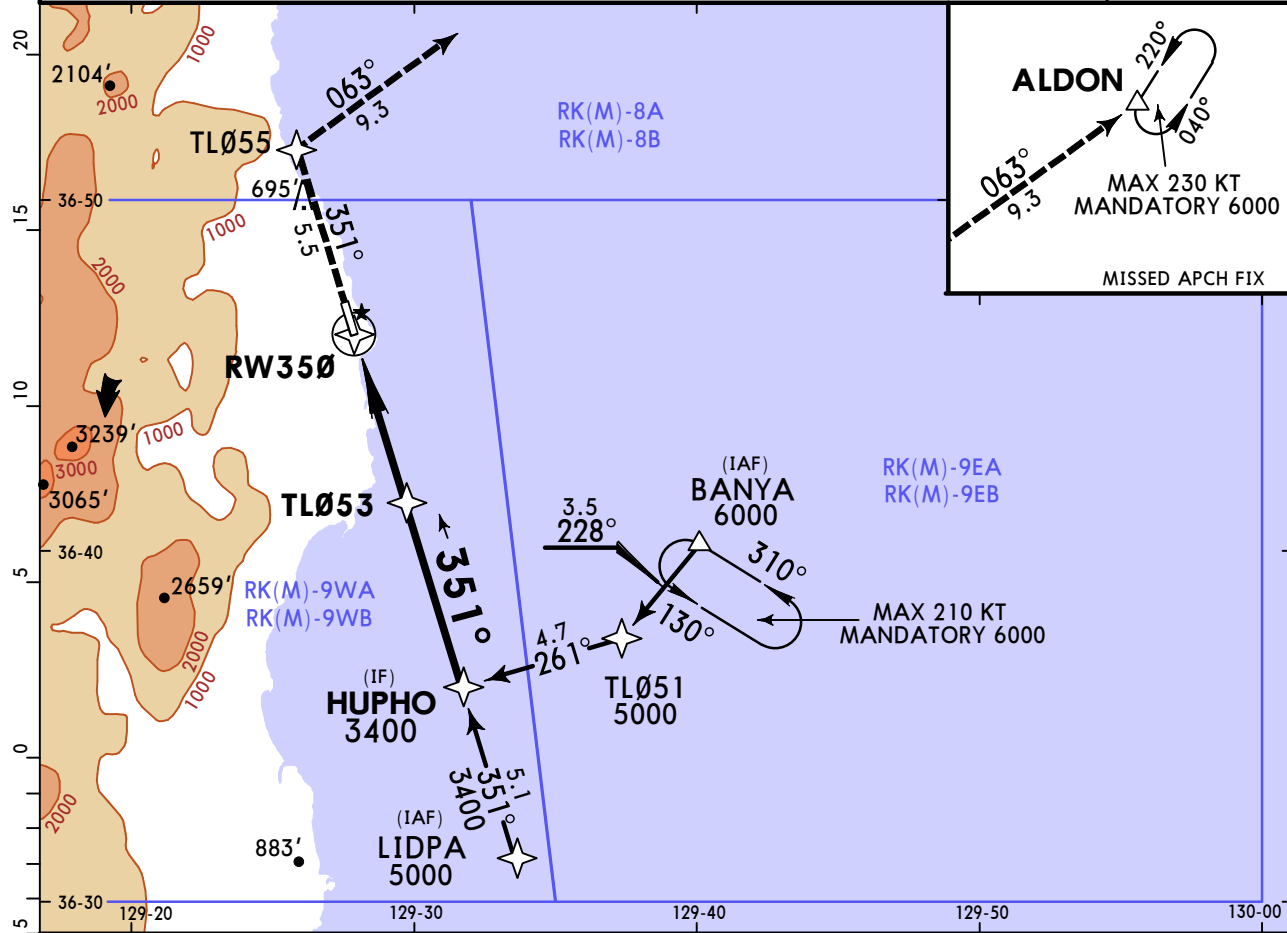
**JEPPESEN**  
6 JAN 23 (12-2)

**ULJIN, KOREA**  
**RNP Rwy 35**

ULJIN Arrival <b>120.875</b>		*ULJIN Tower <b>118.55</b>		*Ground <b>121.775</b>	
RNAV	Final Apch Crs <b>351°</b>	<b>TL053</b> <b>1800' (1642')</b>	LNAV/VNAV DA(H) <b>700' (542')</b>	Apt Elev 175' Rwy 158'	
<b>MISSED APCH: Climb to 6000' on track of 351° to TL055, then turn RIGHT on track of 063° to ALDON. Hold as published.</b> Refer to minimums for missed apch climb gradient.					
Alt Set: hPa		Rwy Elev: 6 hPa		Trans level: FL140	
RNP Apch		RNP 0.30 required			
1. Baro-VNAV not authorized below -20°C or above 45°C. 2. Circling not authorized.					



MSA ARP



Gnd speed-Kts	70	90	100	120	140	160	ALSFI PAPI	6000'	351°	TL055
Glide Path Angle	3.00°	372	478	531	637	849				
MAP at RW350										
Timing not authorized for defining the MAP.										

<b>State</b>		<b>STRAIGHT-IN LANDING</b>			
LNAV/VNAV		LNAV		Missed Apch Climb Gradient MIN 3.0%	
DA(H) <b>700' (542')</b>		MDA(H) <b>760' (602')</b>			
ALS out		ALS out			

PANS OPS	A				
	B				
	C	R/V2200m	R/V2900m	R/V2100m	R/V2800m
	D				

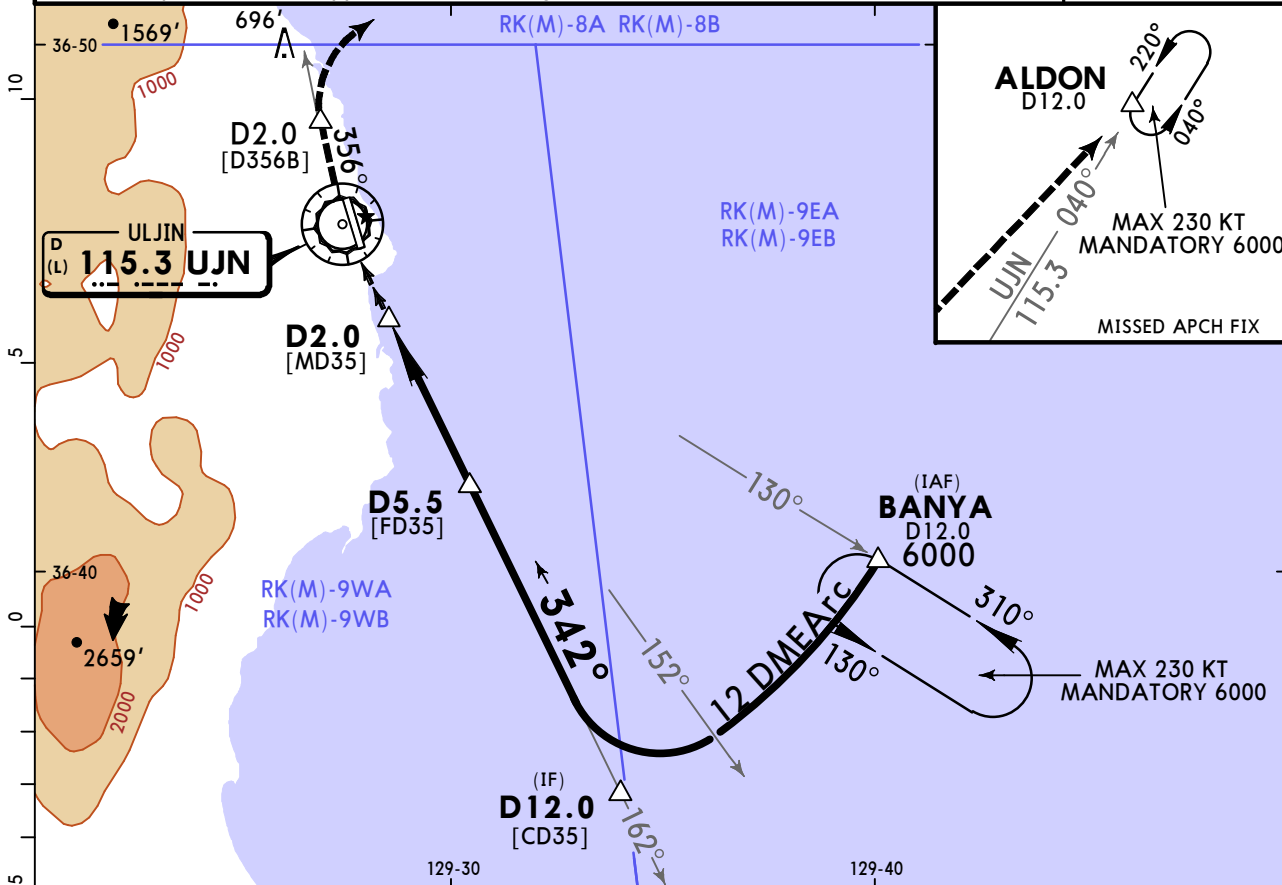


**RKTL**  
**ULJIN**

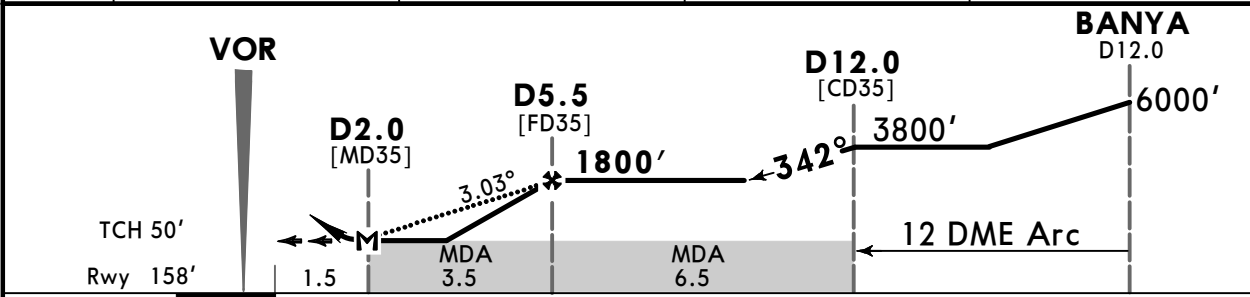
**JEPPESEN**  
6 JAN 23 (13-2)

**ULJIN, KOREA**  
**VOR Rwy 35**

ULJIN Arrival <b>120.875</b>		*ULJIN Tower <b>118.55</b>		*Ground <b>121.775</b>	
VOR UJN <b>115.3</b>	Final Apch Crs <b>342°</b>	<b>D5.5</b> <b>1800'</b> (1642')	MDA(H) <b>600'</b> (442')	Apt Elev 175' Rwy 158'	
<b>MISSED APCH:</b> Climb inbound on UJN VOR R-162 to UJN VOR and outbound on UJN VOR R-356 to D2.0, then turn RIGHT to ALDON and hold at MANDATORY 6000'.					
Alt Set: hPa		Rwy Elev: 6 hPa		Trans level: FL140	
				Trans alt: 14000'	
1. DME required on VOR approach. 2. Circling not authorized.					MSA UJN VOR



UJN DME	2.0	3.0	4.0	5.0
ALTITUDE	673'	995'	1317'	1639'



Gnd speed-Kts	70	90	100	120	140	160
Descent Angle	3.03°	375	482	536	643	750
MAP at D2.0						
Timing not authorized for defining the MAP.						

**State** STRAIGHT-IN LANDING

MDA(H) **600'** (442')

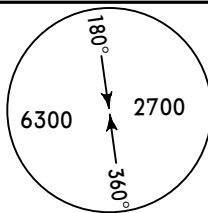
ALS out

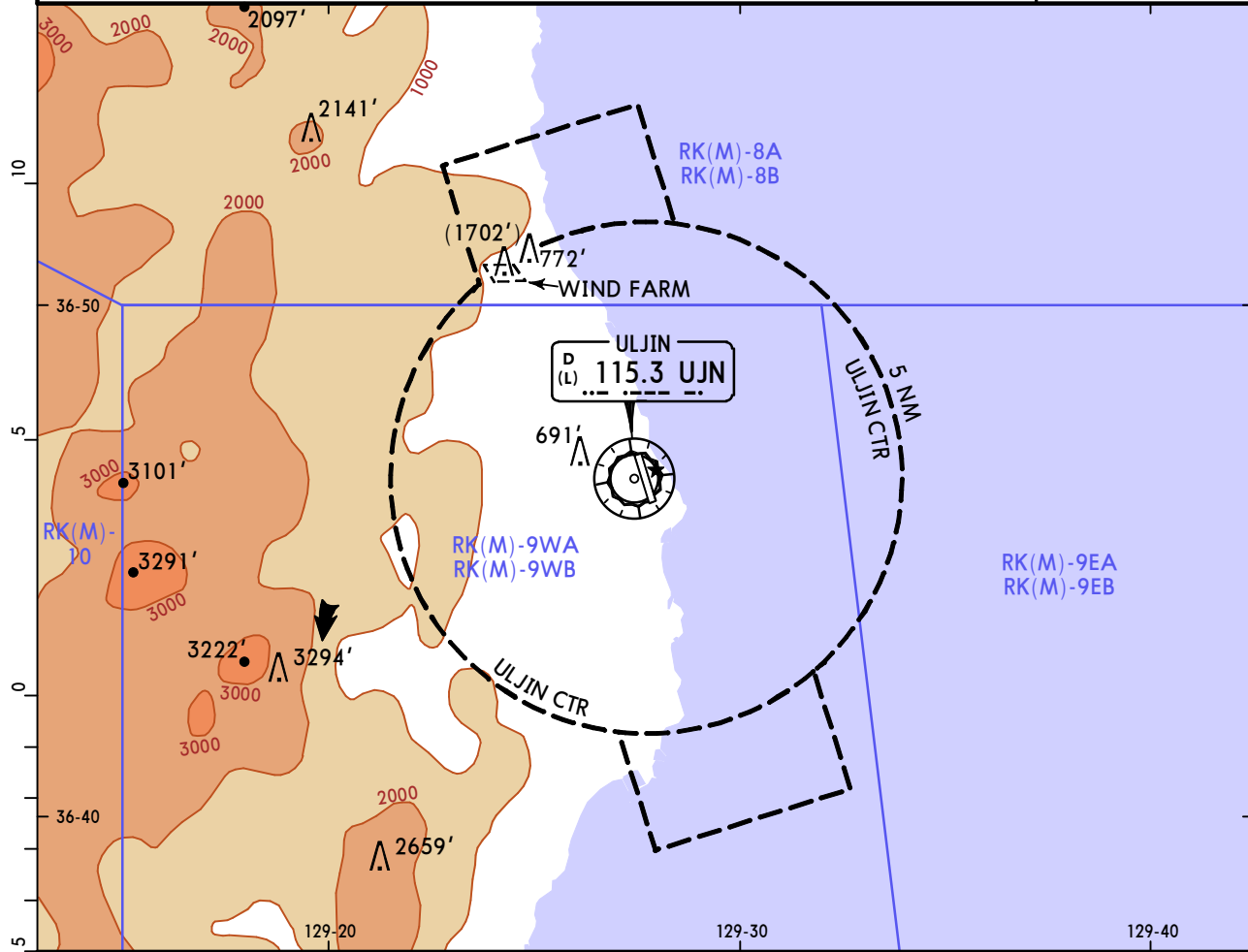
PANS OPS	A		
	B		
	C	R/V2000m	R/V2700m
	D		

**RKTL**  
**ULJIN**

**JEPPESSEN**  
26 MAY 23 **(19-1)**

**ULJIN, KOREA**  
**VISUAL APCH**

BRIEFING STRIP™	ULJIN Arrival		*ULJIN Tower		*Ground
	120.875		118.55		121.775
	NAVAIDS- Refer to Planview	Final Apch Crs NOT APPLICABLE	No FAF	CEIL-VIS NOT APPLICABLE	Apt Elev 175'
	<b>MISSED APCH: No missed approach procedure.</b>				
Alt Set: hPa		Apt Elev: 6 hPa	Trans level: FL140	Trans alt: 14000'	
Visual approach may be initiated by ATC or approved upon pilot request on traffic permitting basis when:					 MSA UJN VOR
a. Ceiling : At or above 500' plus MVA b. Visibility : Not less than 3SM.					



ATS Airspace Classifications		
Airspace	Lateral Limits	Vertical Limits
Class D	Within 5 NM radius from N36 46.6 E129 27.7 (ARP)	SFC - 2500' AGL
	N36 50.4 E129 23.6 then clockwise by an arc of a 5 NM radius centered on the ARP to: N36 51.6 E129 28.4 - N36 53.9 E129 27.5 - N36 52.7 E129 22.7 - N36 50.4 E129 23.6  N36 42.8 E129 31.8 then clockwise by an arc of a 5 NM radius centered on the ARP to: N36 41.6 E129 27.0 - N36 39.3 E129 27.9 - N36 40.5 E129 32.7 - N36 42.8 E129 31.8	1000' - 2500' AGL
		Lighting - Refer to Airport Chart
NOT APPLICABLE		

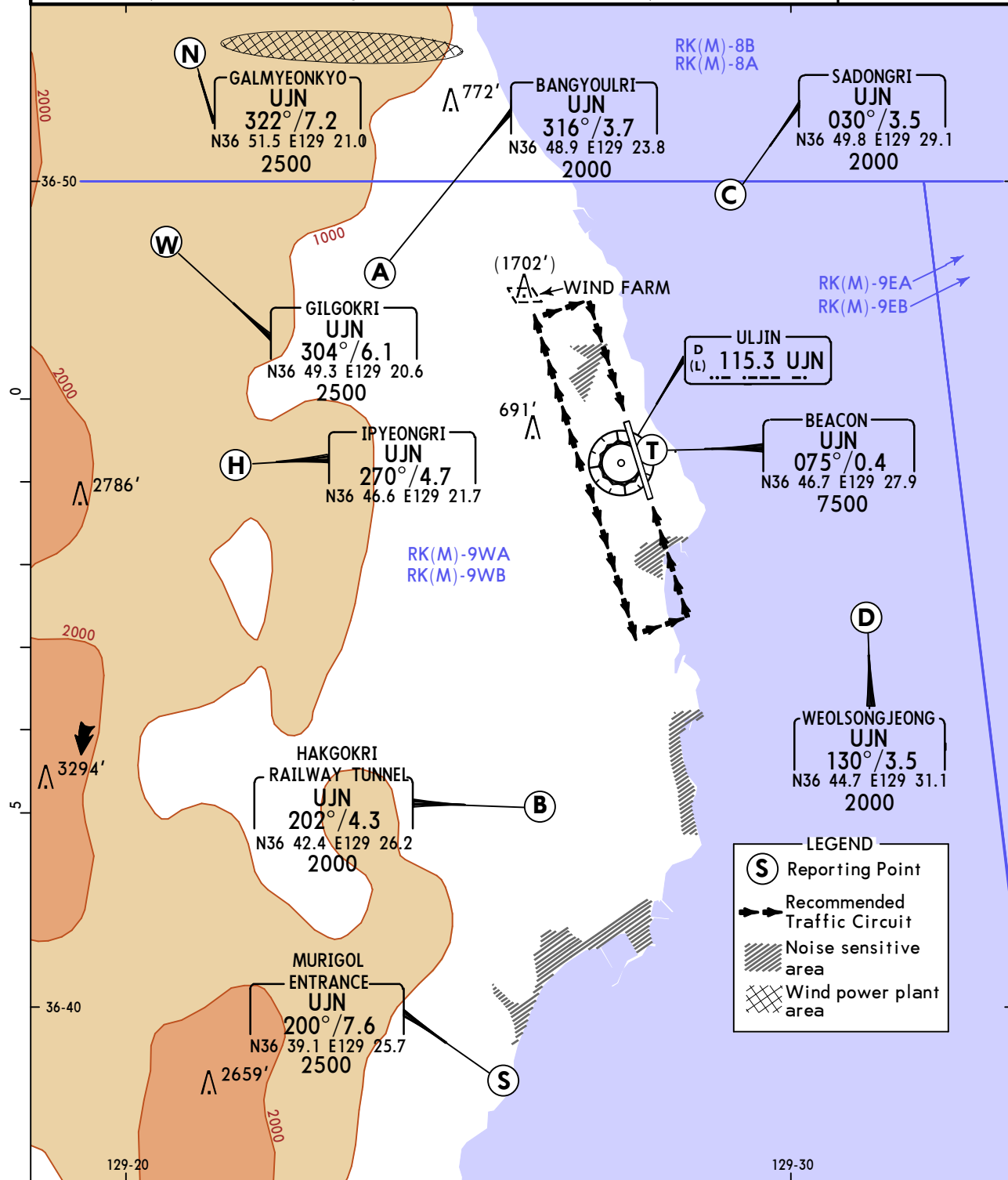
**RKTL**  
**ULJIN**

**JEPPESEN**  
26 MAY 23 (19-2)

**CAT A ONLY** **ULJIN, KOREA**  
**VFR TRAFFIC CIRCUITS**

BRIEFING STRIP™

ULJIN Arrival		*ULJIN Tower		*Ground	
120.875		118.55		121.775	
NAVAIDS- Refer to Planview	Final Apch Crs NOT APPLICABLE	No FAF	CEIL-VIS NOT APPLICABLE	Apt Elev 175'	
<b>MISSED APCH: No missed approach procedure.</b>					
Alt Set: hPa	Apt Elev: 6 hPa	Trans level: FL140	Trans alt: 14000'		
1. All VFR flight operation within ULJIN control zone shall maintain two way communication with ULJIN tower. 2. Pilots are encouraged to use the recommended VFR traffic circuit for traffic flow, noise abatement, and obstacle avoidance. 3. The use of the recommended VFR traffic circuit does not alter the responsibility of each pilot to see and avoid other aircraft and obstacles. 4. Reporting point 'T' applied only for VFR aircraft flying over the west mountains between sunset and sunrise (recommend 'T' crossing altitude at or above 7500' AMSL).					
					<p>MSA UJN VOR</p>



**NOTES:**  
Minimum altitude in the traffic circuit:  
-Aircraft: CAT A: 1500'

## Chart changes since cycle 15-2023

ADD = added chart, REV = revised chart, DEL = deleted chart.

ACT	PROCEDURE IDENT	INDEX	REV DATE	EFF DATE
-----	-----------------	-------	----------	----------

ULJIN, (ULJIN - RKTL)

## TERMINAL CHART CHANGE NOTICES

### Chart Change Notices for Airport RKTL

**Type:** Terminal

**Effectivity:** Temporary

**Begin Date:** 20230222

**End Date:** 20230810

(10-3A) LOSTO 1A, (10-3C) LOSTO 2N & NOBUT 2N, (10-3E) LOSTO 2S & NOBUT 2S, (10-3F) LOSTO 6S, (10-3G) RADAR 1A procedures are not available from 1600 UTC 22 FEB 2023 to 1600 UTC 9 AUG 2023 due to UJN VORTAC temporary unserviceable.

**Type:** Terminal

**Effectivity:** Temporary

**Begin Date:** 20230222

**End Date:** 20230809

APCH PROCS (11-2) ILS Y OR LOC Y RWY 17, (11-4) ILS Y OR LOC Y RWY 35, (13-1) VOR RWY 17, (13-2) VOR RWY 35 ARE NOT AVAILABLE DUE TO VORTAC UJN UNSERVICEABILITY FROM 1600UTC 22 FEB 2023 UNTIL 1600UTC09 AUG 2023.

**Type:** Terminal

**Effectivity:** Temporary

**Begin Date:** 20230222

**End Date:** 20230810

(10-2A) LOSTO 2C & NOBUT 2C, (10-2B) LOSTO 2D & NOBUT 2D procedures are not available from 1600 UTC 22 FEB 2023 to 1600 UTC 9 AUG 2023 due to UJN VORTAC temporary unserviceable.